

NITIN CORPORATION

402, 4th Floor,
Bezzola Commercial Complex,
Sion – Trombay Road,
Chembur,
Mumbai – 400071,
India.

WEB: www.corponit.com

E – MAIL: enquiry@corponit.com
nitincorporation@yahoo.com

PH (O) : +91 - 22 – 25235386 / 25234478

THE FOLLOWING USED STEAM TURBINE IS AVAILABLE FOR SALE WITH US WITH IMMEDIATE DELIVERY:

1 No. – 670 BHP TRIVENI (1988) make Steam Turbine with Gear box having the following technical specifications:

TECHNICAL DETAILS:

TURBINE DETAILS:

Make : TRIVENI
Year of Make : 1976
Type : 500 MM
Power : 670 BHP
Inlet Steam Pressure : 10.5 Kg/Cm²
Inlet Steam Temperature : 275 Deg. C
Exhaust Steam Pressure : 0.7 Kg/Cm²
Operating Speed : 8000 RPM
Trip Speed : 8800/9200 RPM

GEARBOX DETAILS:

Make : TRIVENI
Year of Make : 1976
Capacity : 670 HP
Input Speed : 8000 RPM
Output Speed : 1000 RPM
Gear Box Ratio : 8:1

SCOPE OF SUPPLY:

The above Turbine is complete with the following:

1. Turbine and Gearbox mounted on common baseframe.
2. Governor.
3. Inlet Valve.
4. High Speed Coupling between Turbine and Gearbox.
5. AOP.
6. Oil Cooler.
7. Oil Filter.

NOTE:

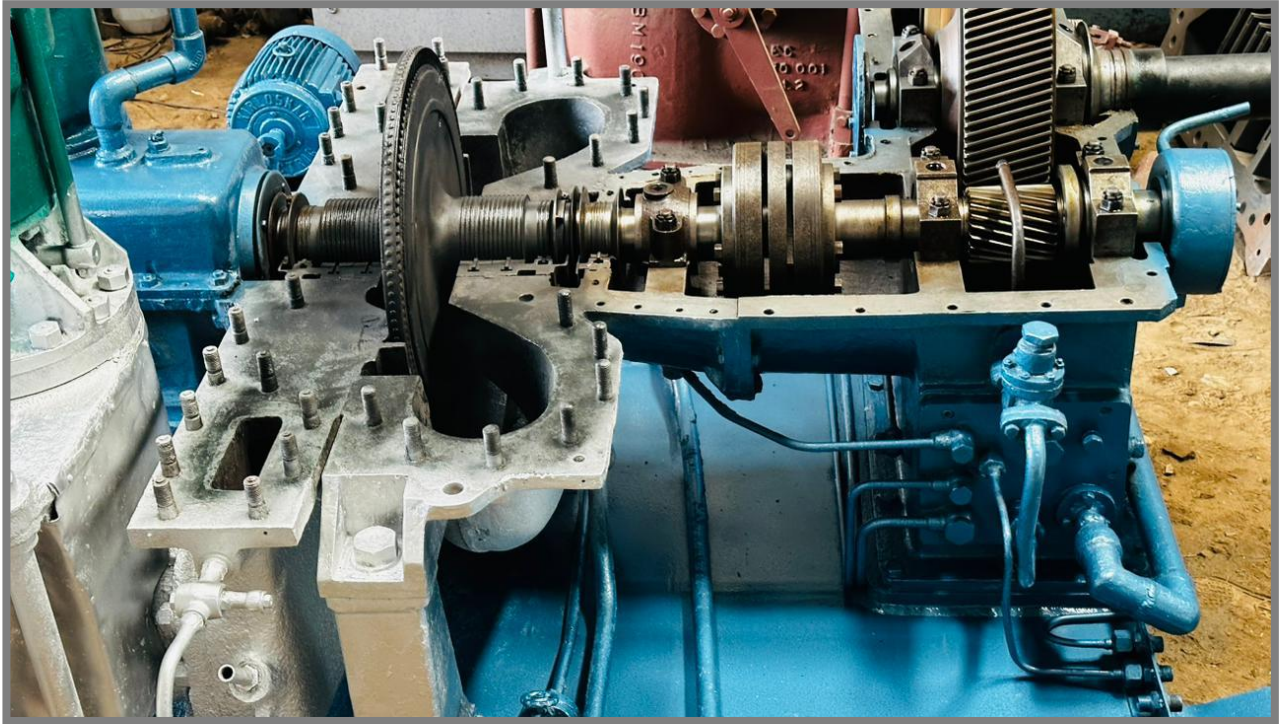
- The above Turbine is in excellent condition.
- The turbine can be presently inspected in our warehouse at Delhi and open inspection of the same can also be arranged.

GENERAL TERMS OF BUSINESS:

Taxes: GST as applicable will be charged extra.
Terms: One-third with the order, balance + GST before delivery.
Delivery: Immediate, ex-warehouse Delhi.
Offer: Strictly subject to prior sale and/or our final confirmation.

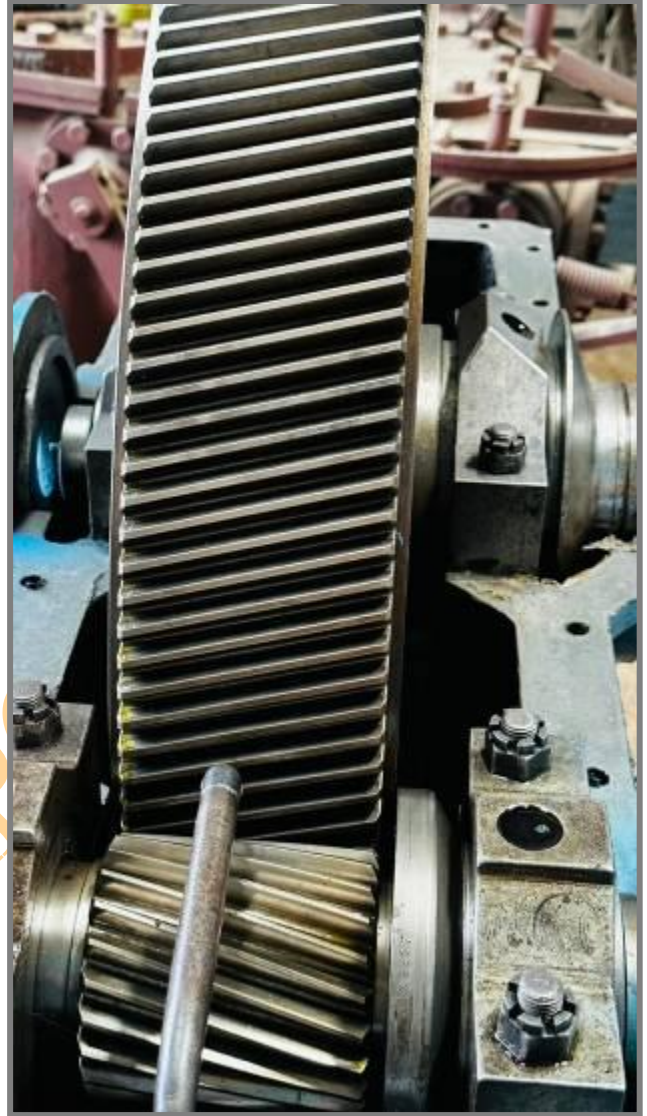
PHOTOS:











NITIN