

**NITIN CORPORATION**

402, 4<sup>th</sup> Floor,  
Bezzola Commercial Complex,  
Sion – Trombay Road,  
Chembur,  
Mumbai – 400071,  
India.

WEB: [www.corponit.com](http://www.corponit.com)

E – MAIL: [enquiry@corponit.com](mailto:enquiry@corponit.com)  
[nitincorporation@yahoo.com](mailto:nitincorporation@yahoo.com)

PH (O) : +91 - 22 – 25235386 / 25234478

**THE FOLLOWING USED STEAM TURBINE IS AVAILABLE FOR SALE WITH US WITH IMMEDIATE DELIVERY:**

**1 No. - 1500 HP APE Belliss (1990) make Back Pressure type Steam Turbine with Gear box having the following technical specifications:**

**TECHNICAL DETAILS:**

**TURBINE:**

Make : APE Belliss India Ltd.  
Type : SS 6A  
Year of make : 1990  
Capacity : 1000 kW  
Normal Inlet Steam Pressure : 35.5 kg/cm<sup>2</sup>  
Maximum Inlet Steam Pressure : 42.5 kg/cm<sup>2</sup>  
Inlet Steam Temperature : 300°C - 400 ° C.  
Exhaust Steam Pressure : 1/1.5 Kg/Cm<sup>2</sup>  
Turbine Speed Range : 4800/6000 RPM

**GEAR BOX:**

Make : Walchandnagar Industries Ltd.  
Type : GN 36 S  
Serial No. : 04/040/1152  
Year of make : 1990-91  
Input Speed : 4800 - 6000 RPM  
Output Speed : 690 – 862 RPM  
Ratio : 6.9:1

**SCOPE OF SUPPLY:**

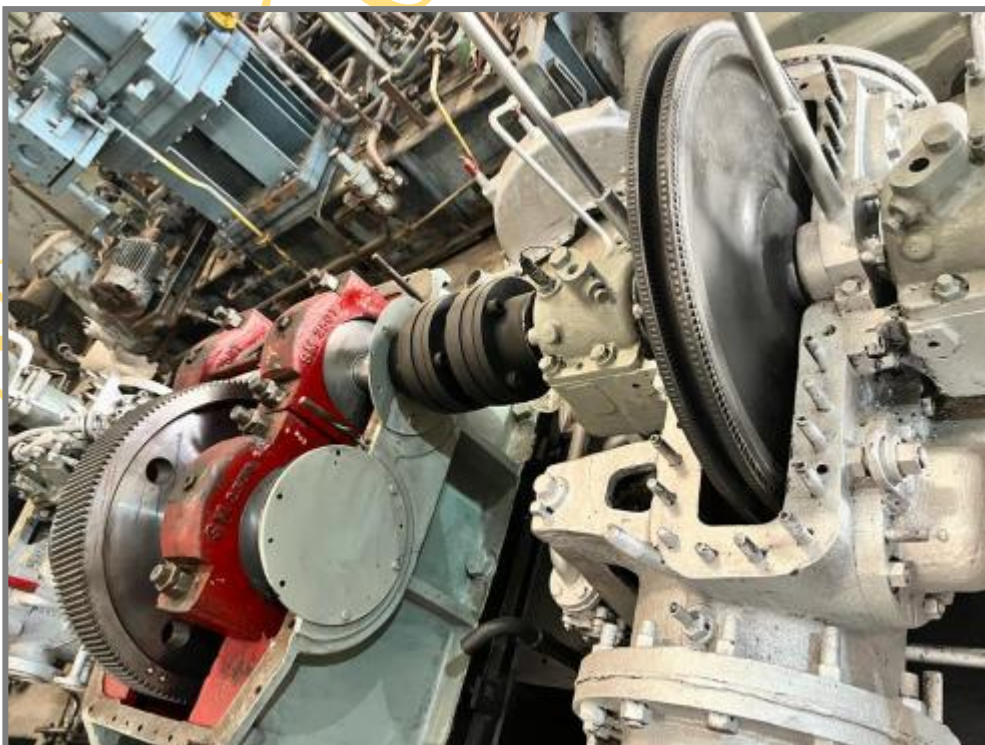
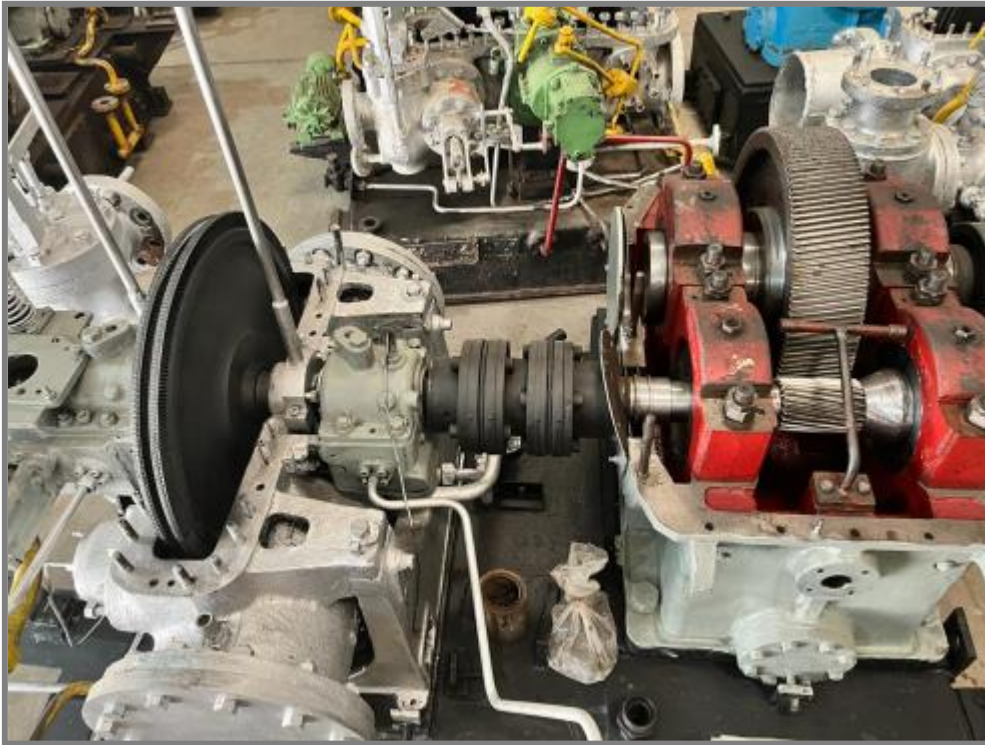
The above Turbine is complete with the following:

1. Turbine and Gearbox mounted on common baseframe.
2. Governor.
3. High Speed Coupling between Turbine and Gearbox.
4. AOP with motor.
5. Oil Cooler.

**NOTE:**

- The above Turbine is in excellent condition.
- The turbine can be presently inspected in our warehouse at Mumbai and open inspection of the same can also be arranged.

**PHOTOGRAPHS:**













NITIN CORPORATION