

NITIN CORPORATION

402, 4th Floor,
Bezzola Commercial Complex,
Sion – Trombay Road,
Chembur,
Mumbai – 400071,
India.

WEB: www.corponit.com

E – MAIL: enquiry@corponit.com
nitincorporation@yahoo.com

FAX : +91 - 22 - 25235386

PH (O) : +91 - 22 - 25234478/67973677

THE FOLLOWING USED BACK PRESSURE STEAM TURBINE GENERATOR SET IS AVAILABLE FOR SALE WITH US WITH IMMEDIATE DELIVERY :

1 No. – 2.5 MW, TRIVENI (1988) make, Back Pressure type Steam Turbine Generator Set having the following technical specifications:

TECHNICAL DETAILS:

TURBINE DETAILS:

Make	:	TRIVENI (INDIA)
Type	:	550 mm
Year Of Make	:	1988
Capacity	:	2500 kW
Speed	:	8250 RPM
Inlet Steam Pressure	:	19/21 Kg/Cm ²
Inlet Steam Temperature	:	300/340 Deg. C
Exhaust Steam Pressure	:	1.5 Kg/Cm ²
Exhaust Steam Temperature	:	160 Deg. C.

GEARBOX DETAILS:

Make	:	Triveni (India)
Year of Make	:	1988
Capacity	:	3125 kVA
Input Speed	:	8250 RPM
Output Speed	:	1500 RPM
Ratio	:	5.5:1

ALTERNATOR DETAILS:

Make	:	BHEL
Frame Size	:	AG-52/45
Capacity	:	2500 kW
Speed	:	1500 RPM
kVA	:	3125
Voltage	:	440V
P.F.	:	0.8
Amps	:	4110A
Cycles	:	50 Hz

**NITIN CORPORATION
MUMBAI.**

No. of phases	:	3
No. of poles	:	4
Connection	:	Star

SCOPE OF SUPPLY:

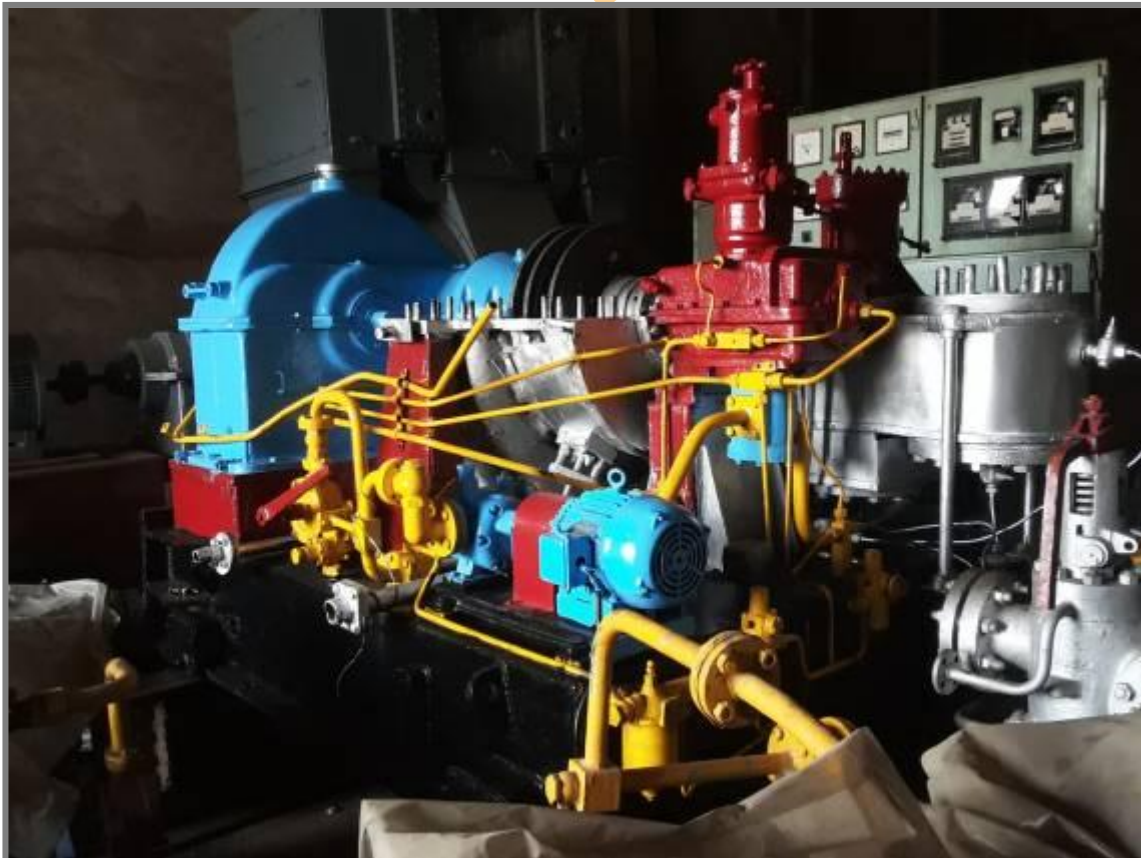
The STG set will be delivered with following auxiliaries and accessories:

1. Inlet valve.
2. Governing system.
3. Turbine & Gear box alongwith coupling mounted on common baseframe (oil tank).
4. Exhaust bellow.
5. 1 No. Oil cooling system complete with 1 No. oil cooler, 2 Nos. Oil Filters, 1 No.AOP with electric motor, 1 Lot of all interconnecting oil pipelines, etc.
6. Alternator mounted on baseframe.
7. Alternator Coolers.
8. AVR panel.
9. ACB Panel.
10. 1 No. Turbine Control Panel.

NOTE:

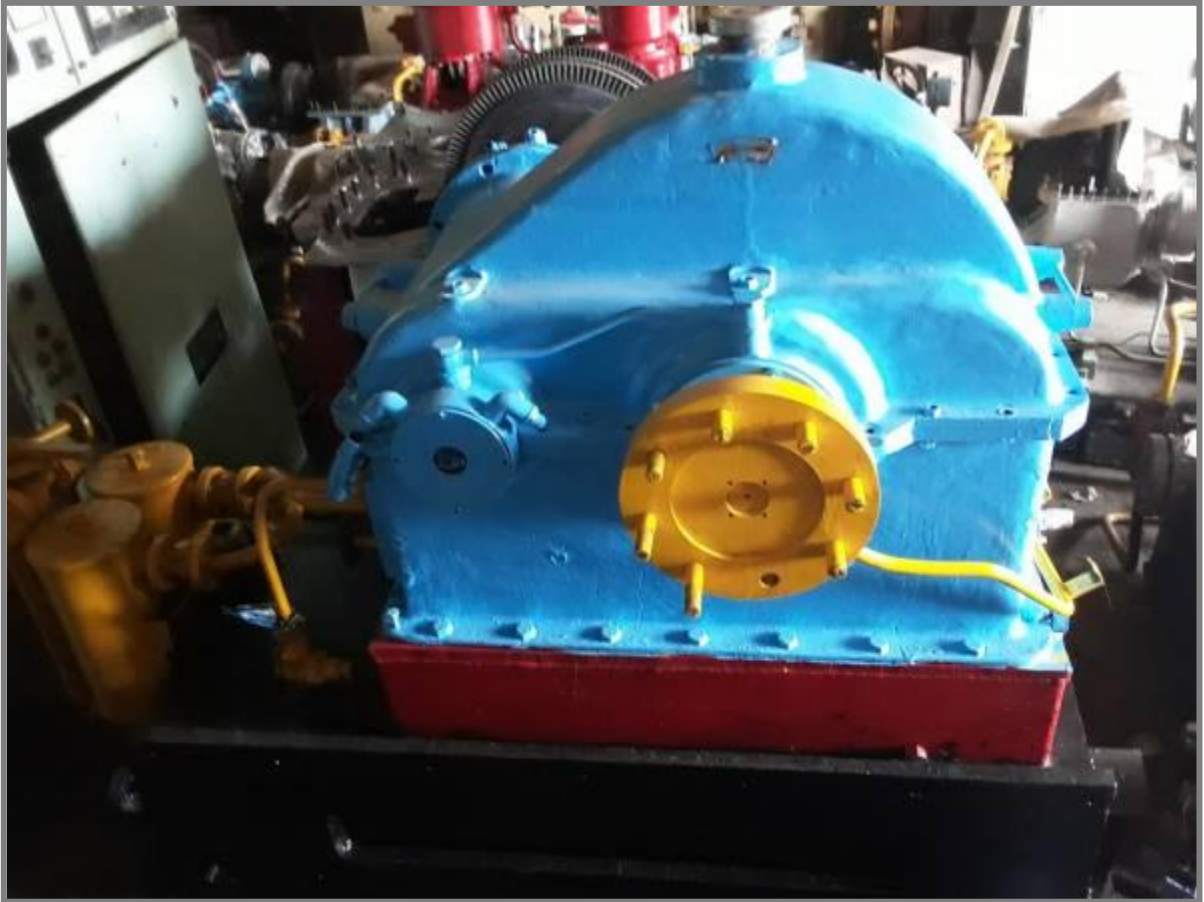
The STG Set is in excellent condition and can be presently inspected in our warehouse at Mumbai.

PHOTOGRAPHS:





**NITIN CORPORATION
MUMBAI.**



**NITIN CORPORATION
MUMBAI.**



**NITIN CORPORATION
MUMBAI.**



**NITIN CORPORATION
MUMBAI.**



**NITIN CORPORATION
MUMBAI.**