

NITIN CORPORATION

402, 4th Floor,
Bezzola Commercial Complex,
Sion – Trombay Road, Chembur,
Mumbai – 400071,
India .

WEB : www.corponit.com

E – MAIL : nitincorporation@yahoo.com
enquiry@corponit.com

PH (O): +91 - 22 - 25234478/67973677

FAX : +91 - 22 - 25235386

THE FOLLOWING BACK PRESSURE TYPE STEAM TURBINE GENERATOR SET IS AVAILABLE FOR SALE WITH US WITH IMMEDIATE DELIVERY:

1 No. – 720 kW, APE BELLISS (1987) make Steam Turbine Generator set having the following technical specifications:

TECHNICAL DETAILS:

TURBINE DETAILS:

Make : APE BELLISS (India)
Type : SSK 5AD
Year of make : 1987
Progressive No. : BM/3517/B
Capacity : 720 kW
Inlet Steam Pressure : 33 Kg/Cm²
Inlet Steam Temp. : 400 °C.
Exhaust Steam Pressure : 9 Kg/Cm²
Speed : 6000 RPM

GEAR BOX DETAILS:

Make : WALCHANDNAGAR INDUSTRIES
Type : GN 25
Year of make : 1986
Capacity : 720 KW
Input Speed : 6000 RPM
Output Speed : 1500 RPM
Ratio : 4:1
Lube Oil Pressure : 1-2 Kg/Cm²

ALTERNATOR DETAILS:

Make : Kirloskar Ltd.
Capacity : 1000 kW
Speed : 1500 RPM
kVA : 1250
Voltage : 440V
PF : 0.8
Cycles : 50 Hz.

*NITIN CORPORATION,
MUMBAI.*

*1 No. 720 kW APE Belliss (1987)
Back Pressure Steam Turbine Generator Set*

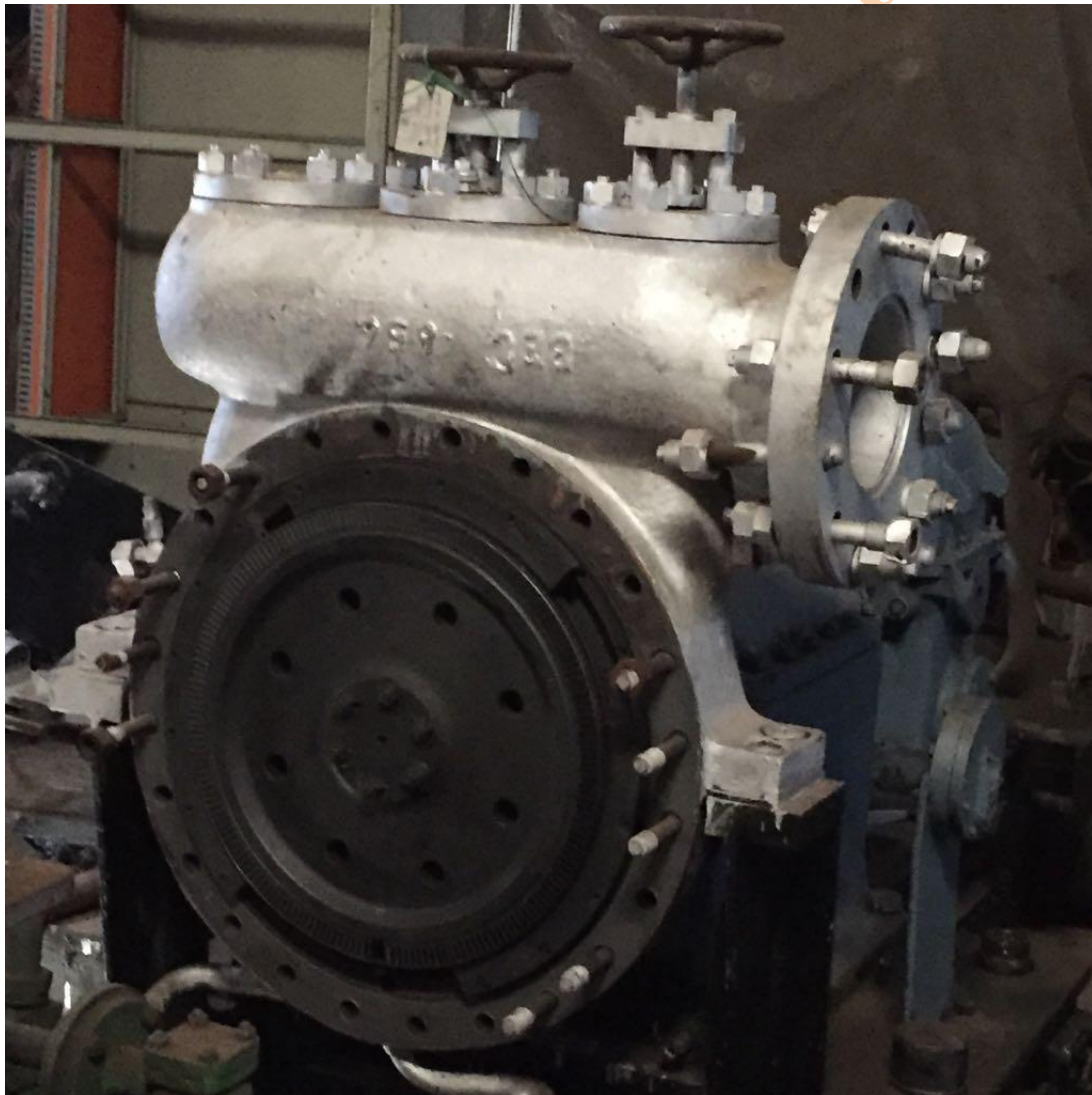
No.of phases : 3
No.of poles : 4
Connection : Star

SCOPE OF SUPPLY:

The above turbine is complete with the following accessories:

- a. Inlet valve.
- b. Governing system.
- c. Turbine and Gear box alongwith coupling mounted on common base frame. (Oil tank).
- d. AOP with motor – 1 No.
- e. Oil Filters.
- f. Oil Pipelines.
- g. Alternator Panels.

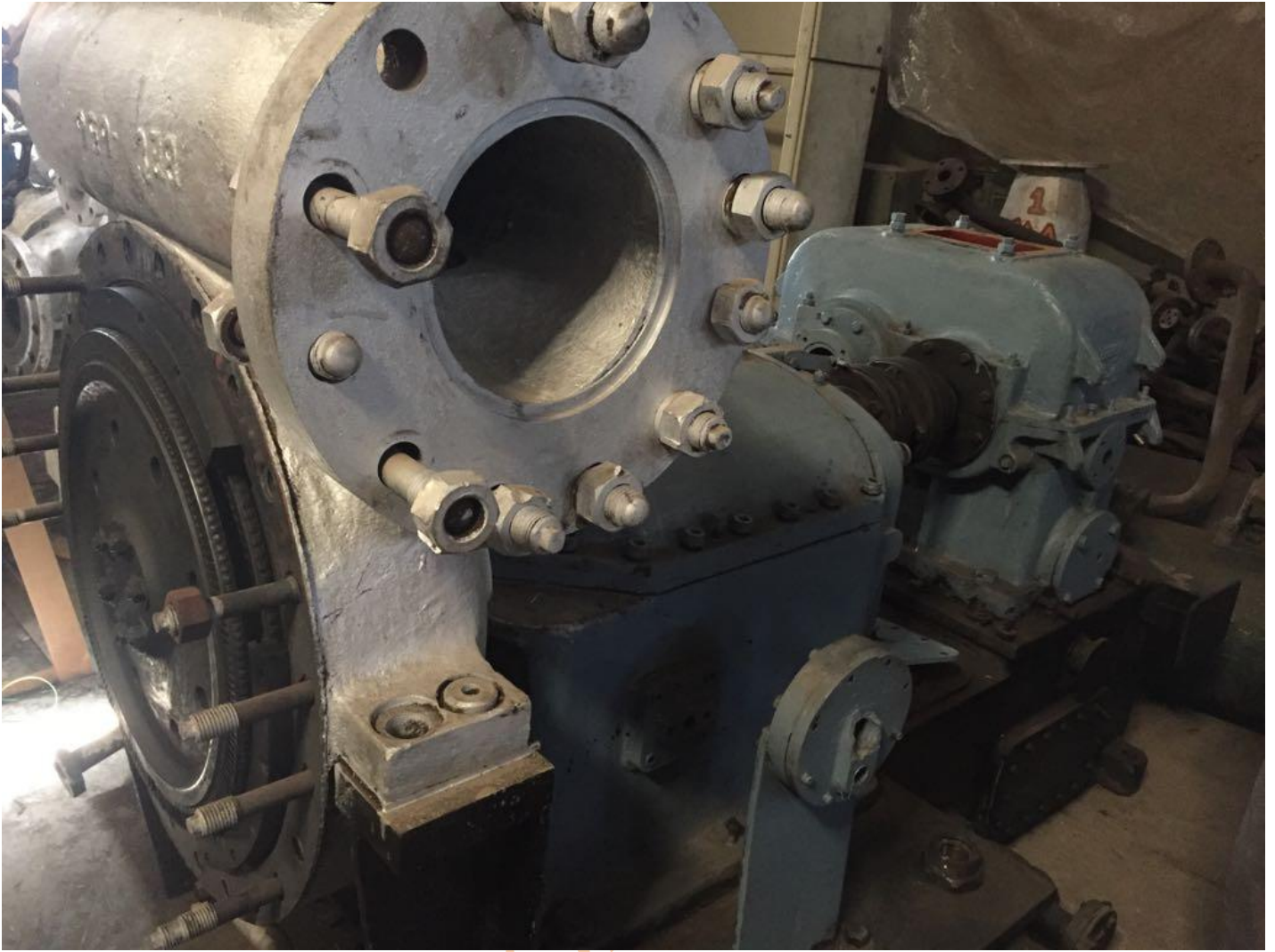
PHOTOGRAPHS:





*NITIN CORPORATION,
MUMBAI.*

*1 No. 720 kW APE Belliss (1987)
Back Pressure Steam Turbine Generator Set*



NITIN CORP



*NITIN CORPORATION,
MUMBAI.*



*1 No. 720 kW APE Belliss (1987)
Back Pressure Steam Turbine Generator Set*