

**NITIN CORPORATION**

402, 4<sup>th</sup> Floor,  
Bezzola Commercial Complex,  
Sion – Trombay Road,  
Chembur,  
Mumbai – 400071,  
India.

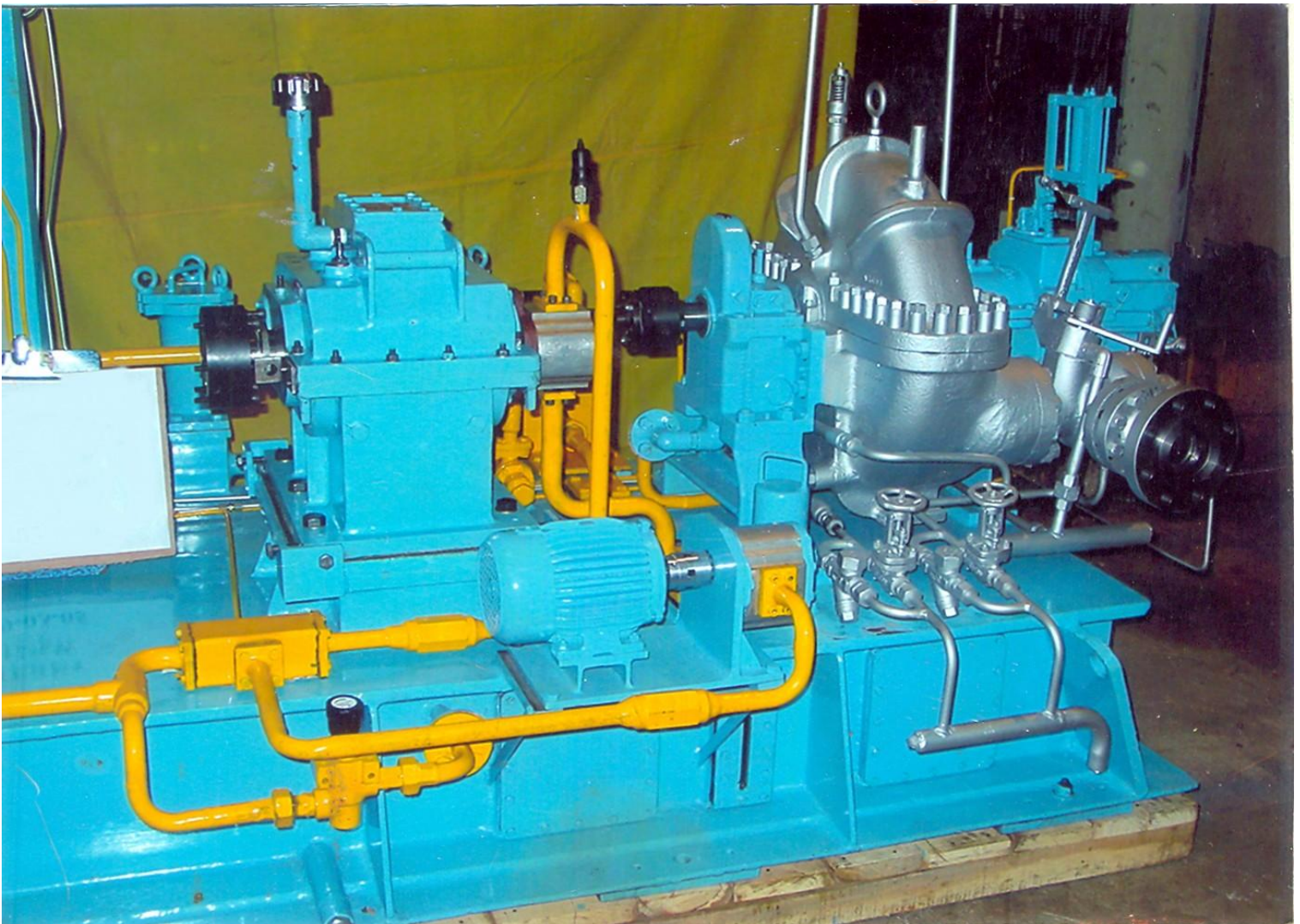
WEB : [www.corponit.com](http://www.corponit.com)

E – MAIL : [nitincorporation@yahoo.com](mailto:nitincorporation@yahoo.com)  
[enquiry@corponit.com](mailto:enquiry@corponit.com)

FAX : +91 - 22 - 25235386

PH (O) : +91 - 22 - 25234478/67973677

**1 No. 200 kVA TERRY/KIRLOSKAR make STG set available for sale with us as per technical details given hereunder:**



**TURBINE:**

Make : TERRY Steam Turbine Co.USA  
Type : 18ZS1  
Inlet Pressure : 650 psig  
Inlet Temp. : 600° F  
Capacity : 200 kVA  
Speed : 4000 RPM  
Exhaust pressure : 160 psig

**GEAR BOX:**

Make : NCON  
Capacity : 200 kVA  
Input speed : 4000 RPM  
Output speed : 1500 RPM  
Ratio : 2.66:1

**ALTERNATOR:**

Make : Kirloskar Electric Co.  
Year of manufacture : 2005  
Capacity : 200 kVA  
Speed : 1500 RPM  
V. : 415 V  
No.of poles : 4  
Phase : 3  
AVR : Builtin  
P.F. : 0.8



The above STG set is complete with the following:

- 1) Governing system : WOODWARD TG-10
- 2) Stop and Emergency Valve : TERRY make
- 3) Complete Lube Oil system comprising:
  - a) Electrically driven oil pump : Dynamic
  - b) Main Oil Pump : Dynamic
  - c) Pressure Regulating /Relief Valve/NRV: Available
  - d) 1 No. Lube Oil Cooler : NEIL Fabs.
  - e) Lube Oil Filter : Duplex Filter
  - f) Lube Oil connecting pipeline : MS
  - g) Oil Tank Capacity : 300 Ltrs.



- 4) Common Base Frame, MS fabricated for turbine, gearbox, lube oil system and generator.
- 5) Turbine and generator integrated control panel with all gauges.

The above STG set is in excellent condition and can be presently inspected in our warehouse in Mumbai. Open inspection of the set can also be arranged.

