



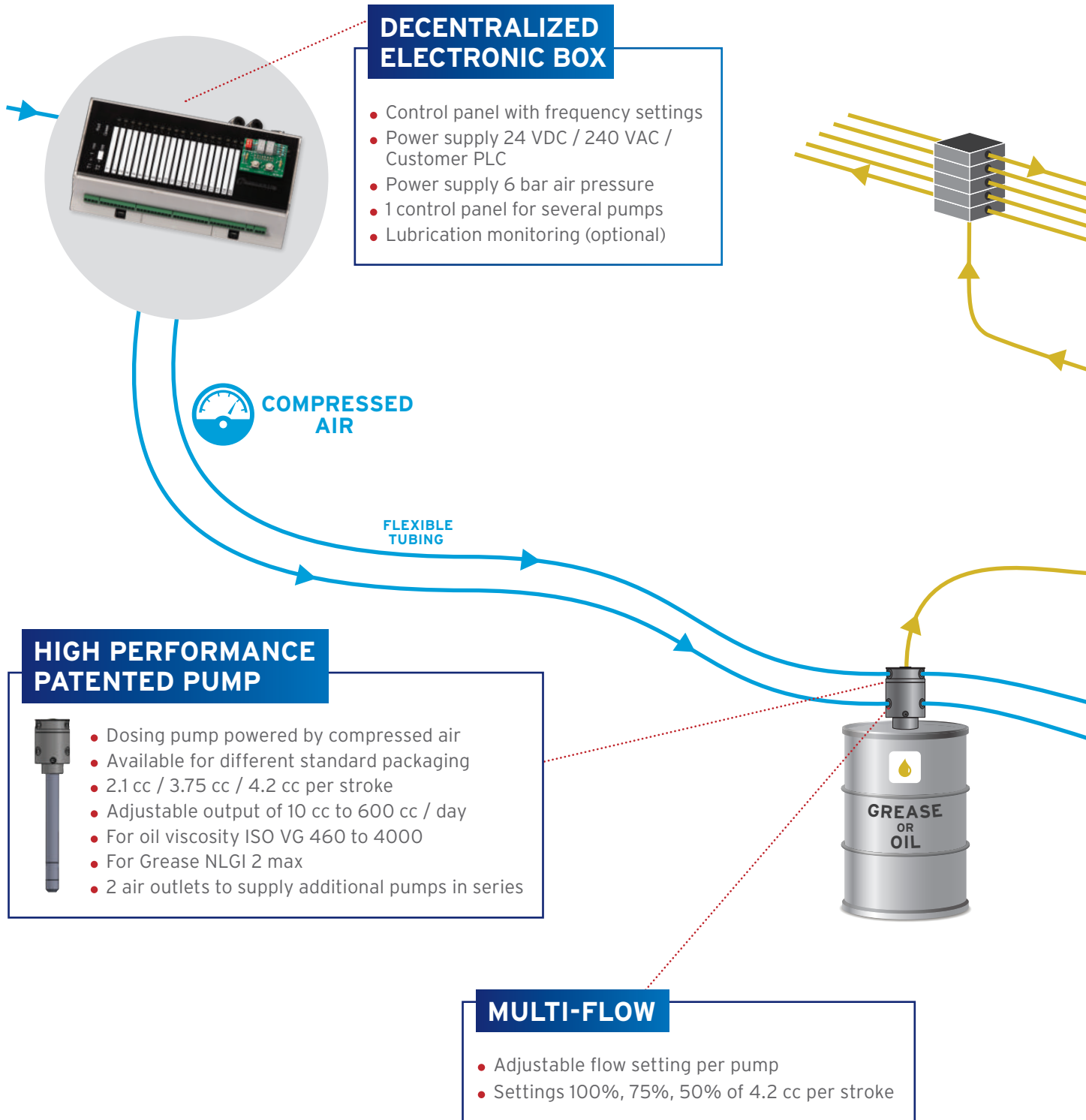
**MEMOLUB®**



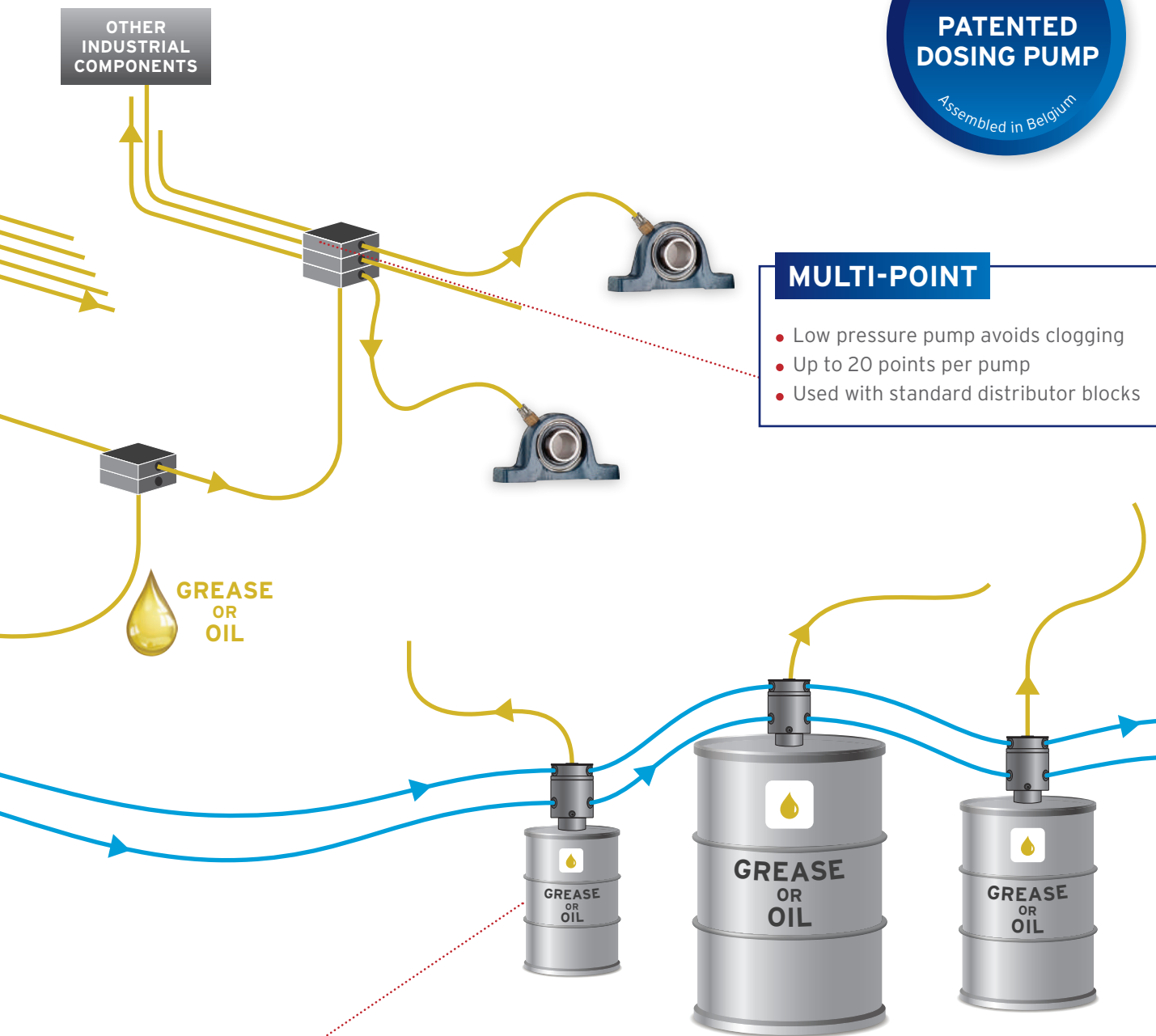
## **DECENTRALIZED LUBRICATION SYSTEM**

- **multi-setting dosing pump**
- **preserving lubricant performance**
- **low pressure lubrication system**
- **simplified installation use**
- **for all types of industries**
- **guaranteed return on investment**

# Multi-point automatic lubrication suitable for one or several lubricants



# system, with adjustable flow, ants simultaneously



**MULTI-POINT**

- Low pressure pump avoids clogging
- Up to 20 points per pump
- Used with standard distributor blocks

**MULTI-PRODUCT**

- Usable with standard packaging
- Environmentally friendly
- Unlimited number of lubricants per installation

# Memolub DS<sup>®</sup>, the low pressure system that preserve lubricant performance

## LOW PRESSURE LUBRICATION SYSTEM

- Low pressure system - installation with flexible tubes
- Designed to prevent lubricants deterioration
- Reduced installation cost
- Clogging risk reduction
- Low maintenance cost

## LUBRICANT FRIENDLY

- System adapted to lubricants constraints
- Suitable for all quality greases and oils
- Multi function monitoring system
- Compatible with standard packaging

## UNMATCHED PERFORMANCE

- Decentralized and secured electronic system for several pumps
- 1 system, several types of lubricants
- Up to 20 lube points per pump

## ECONOMIC - COST EFFECTIVE

- Low energy consumption
- Inexpensive installation
- Low maintenance cost

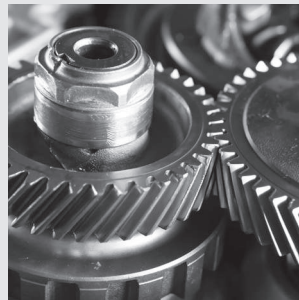
## INDUSTRIAL COMPONENTS



BEARINGS



CHAINS



GEARS



BALL SCREW

# An innovative product for multiple sectors



Aerospace



Food



Automotive



Wood



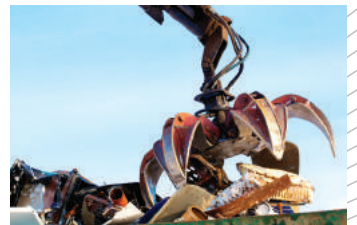
Chemical & plastics



Cement / Quarries



Energy / Wind



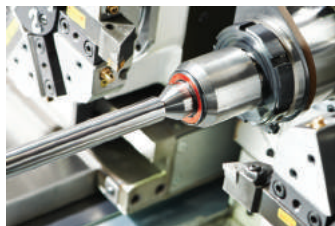
Environment



Naval



Port facilities



Mechanical



Paper / Cardboard



Pharmaceutical



Steel industry / Metal



Textile



Glass

## APPLICATIONS



CONVEYOR BELT



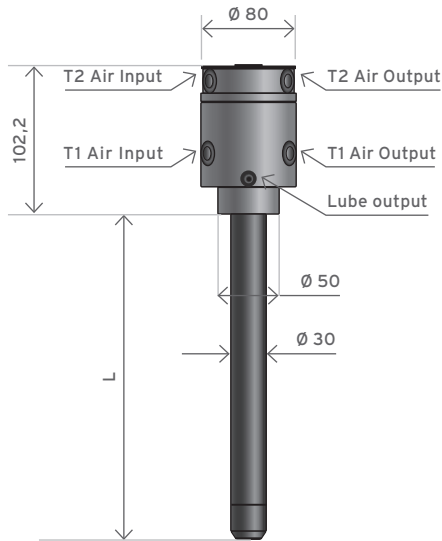
ROLLING MILL



INCINERATOR

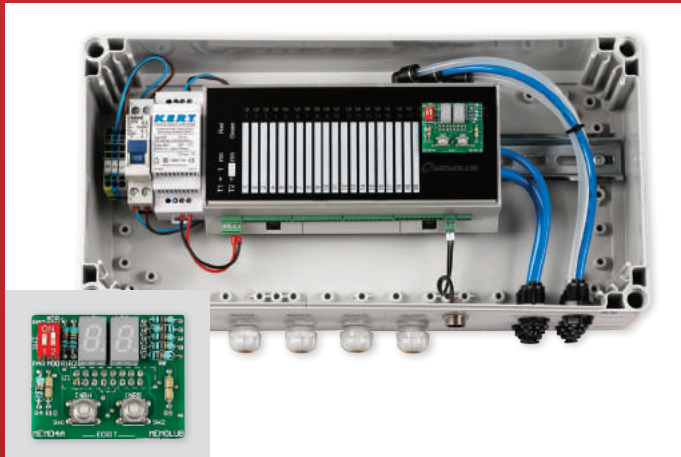


OVEN



## Dosing Pump

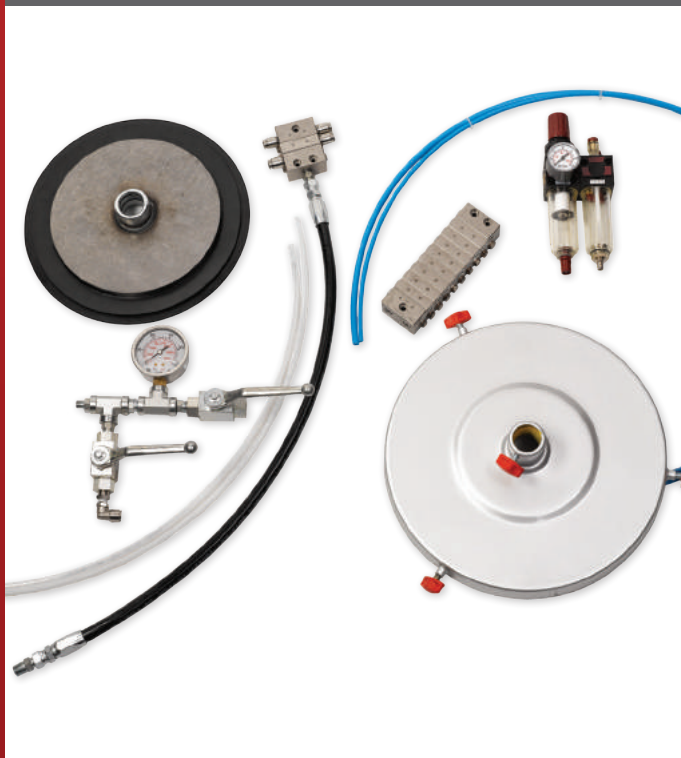
Technical data		Pump 18 kg	Pump 50 kg
Pump ratio		22/1	22/1
Input air pressure	bar	6	6
T1 / T2 thread	BSP	F 1/4" G	F 1/4" G
T1 tubing	mm	Ø 6 - 8	Ø 6 - 8
T2 tubing	mm	Ø 4 - 6	Ø 4 - 6
Lube output thread	BSP	F 1/8" G	F 1/8" G
Diameter rod	mm	Ø 30	Ø 30
Expulsion per stroke	cm <sup>3</sup>	4,2	4,2
Length rod (L)	mm	450	700
Packaging / container	kg	18-30 kg	50-60 kg
Weight dosing pump	kg	5,10 kg	6,50 kg



## Decentralized Electronic Box

Box: 2 versions	24 VDC / 220 VAC 50Hz
Box dimensions	400 x 200 x 132 mm
Supply voltage	24 DC / 240 VAC - 0.55A max
Electric circuit protection	Breaker 6A
Electric cable for 240VAC	3G1.5 type H07RNF (a)
Pneumatic input	6 bar
Operating temperature	-20°C to +55°C (-4°F to 131°F)
Air output - transfer tube	8 mm
Air output - expulsion tube	6 mm
Weight electronic box	1 kg

## Pump Installation accessories (kit)



## Follower plate

Available for 18 kg and 50 kg



## YOUR DISTRIBUTOR

LubricationUk Ltd  
 Unit 5  
 The Green Ind, Est  
 Clun  
 Shropshire  
 SY7 8LG  
 tel: 01584874220 / 07885467673  
 Info@lubricationuk.com  
 www.lubricationuk.com