

**NITIN CORPORATION**

402, 4<sup>th</sup> Floor,  
Bezzola Commercial Complex,  
Sion – Trombay Road,  
Chembur,  
Mumbai – 400071,  
India.

WEB: [www.corponit.com](http://www.corponit.com)

E – MAIL: [enquiry@corponit.com](mailto:enquiry@corponit.com)  
[nitincorporation@yahoo.com](mailto:nitincorporation@yahoo.com)

FAX : +91 - 22 - 25235386

PH (O) : +91 - 22 - 25234478/67973677

**THE FOLLOWING STEAM TURBINE GENERATOR SET IS AVAILABLE FOR SALE WITH US WITH IMMEDIATE DELIVERY:**

**1 No. – 2 MW BELLISS (2003) make Steam Turbine Generator Set having the following technical specifications:**



### **TURBINE DETAILS:**

Make : BELLISS

Type : SBP -350

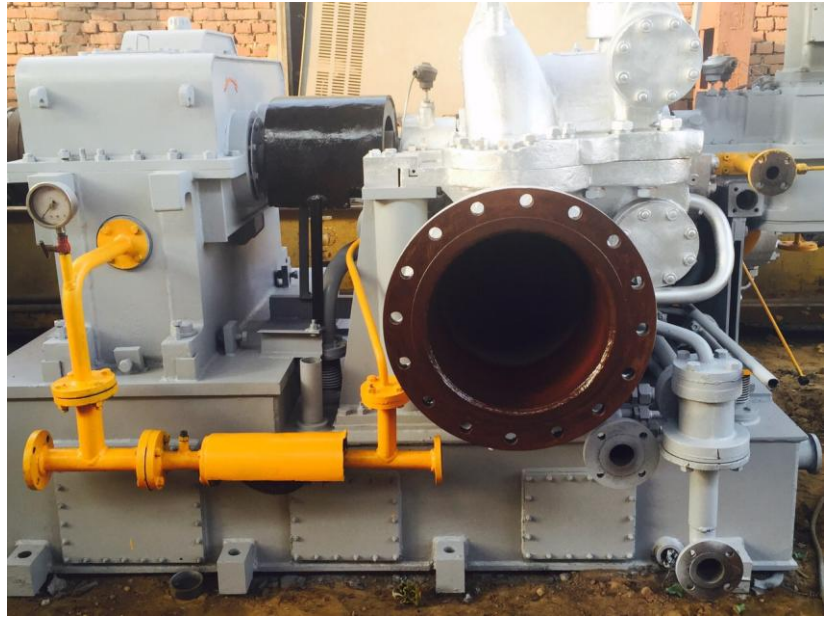
Year of make : 2003

Capacity : 2000 kW

Inlet steam pressure : 42 Kg/Cm2

Exhaust pressure : 1/1.5  
Kg/Cm2

Speed : 10250 RPM



### **GEAR BOX DETAILS:**

Make : WIL

Type : GS-40

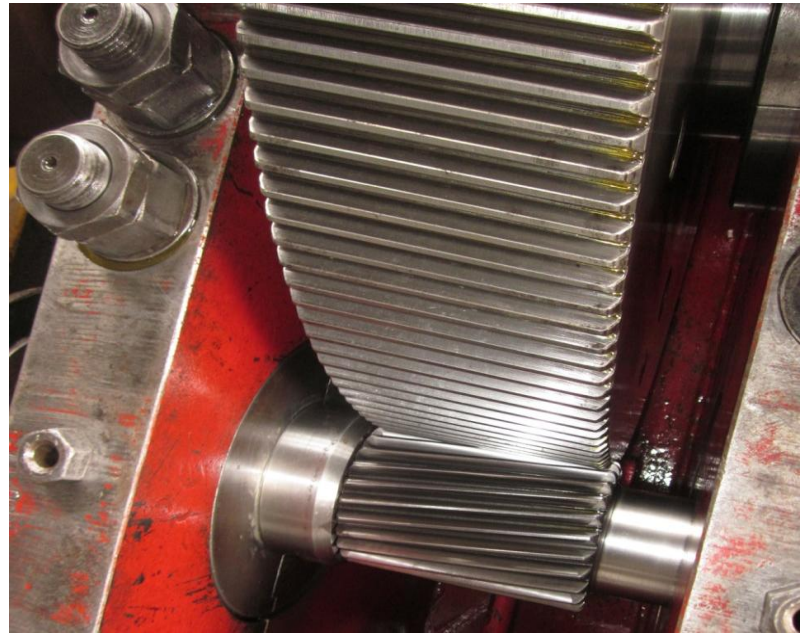
Year of Make : 2002

Capacity : 2000 kW

Input Speed : 10250 RPM

Output Speed : 1500 RPM

Ratio : 6.83:1



### **ALTERNATOR DETAILS:**

Make : Crompton

Geaves

Year of make : 2003

Capacity : 2000  
kW(2500 kVA)

Speed : 1500 RPM

Voltage : 420 V

No. of phases : 3

No. of poles : 4

Frequency : 50 Hz.

Power Factor : 0.8

Insulation Class : F



### **SCOPE OF SUPPLY:**

The STG set is in excellent condition and delivered with following auxiliaries and accessories:

1. Inlet valves, throttle valve, etc.
2. Governing system.
3. Turbine & Gear box alongwith coupling mounted on common baseframe (oil tank).
4. 1 No. Exhaust bellow.
5. 1 No. Exhaust valve.
6. 1 No. Oil cooling system complete with 2 Nos. oil coolers, 2 Nos. duplex oil filters, 1 No. AOP  
with electric motor, 1 No. Hand Pump, 1 Lot of all interconnecting oil pipelines.
7. Alternator mounted on baseframe alongwith side mounted radiators.
8. Water pipeline upto first flange on either side.
9. 2 Nos. AVR panels.
10. 2 Nos. ACB Panels.
11. 1 No. Turbine control panel.
12. 1 No. NGR panel.





OVERALL VIEW STG Set - 1



OVERALL VIEW Turbine -1



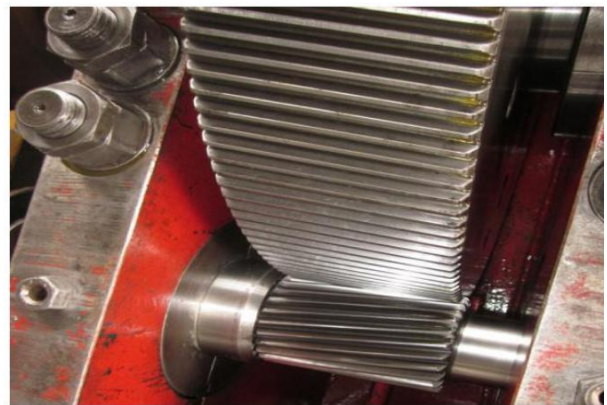
OVERALL VIEW STG Set - 2



OVERALL VIEW Turbine -2



OVERALL VIEW Alternator



GEAR BOX INTERNALS



TURBINE ROTOR - 1



TURBINE ROTOR - 2



TURBINE ROTOR - 3



TURBINE ROTOR - 4





TURBINE ROTOR - 5



TURBINE ROTOR - 6



GOVERNOR - 1



GOVERNOR - 2



CONTROL PANEL - 1



CONTROL PANEL - 2



CONTROL PANEL - 3



CONTROL PANEL - 4



AVR PANEL - 5



CONTROL PANEL - 6