

NITIN CORPORATION

402, 4th Floor,
Bezzola Commercial Complex,
Sion – Trombay Road,
Chembur,
Mumbai – 400071,
India.

WEB : www.corponit.com

E – MAIL : enquiry@corponit.com
nitincorporation@yahoo.com

PH (O) : +91 - 22 - 25235386
: +91 - 22 - 25234478

THE FOLLOWING GAS ENGINE GENERATOR SETS ARE AVAILABLE FOR SALE WITH US WITH IMMEDIATE DELIVERY:

2 Nos. – 6.3 MW each, Wartsila (2010) make, type W16V34SG Gas Engine Generator Sets with WHRBs, having the following technical specifications:

TECHNICAL SPECIFICATION – WARTSILA GAS ENGINES & ALTERNATORS:

Sr. No.	Particulars	Specifications
A	Engine Main data:	
1	Configuration	V Engine
2	Number of Cylinder	16 Nos.
3	Cylinder bore X Stroke (mm)	340x400
4	Rated Speed (RPM)	750
5	Mean Piston Speed (m/sec)	10
6	Mean effective pressure (bar)	19.8
7	Swept volume per cylinder (dm ³)	36.3
8	Compression ratio	12:01
9	No. of inlet valves	2
10	No. of outlet valves	2
11	Direction of rotation faced towards fly wheel	Clockwise
12	Length (mtr)	8.21
13	Width (mtr)	3.3
14	Height (mtr)	3.6
15	Weight (kg)	67000
16	Model	W16V34SG
17	Make	Wartsila, Finland
19	Installation date	1 st unit - 31/03/2011 & 2 nd unit- 26/03/2011
20	Rated Output(Kw)	6375
21	Cycle stroke	Four Stroke

22	Starting System	Compressed air (30Kg/cm ²)
23	Supercharging system	Exhaust Gas Turbocharger
24	Fuel	Natural Gas
25	Lubrication	Forced Lubrication(Engine Driven Pump)
26	Total Running hours	1 st unit - 13533 hours & 2 nd unit – 13543 hours
B Generator Main Data:		
1	Power	7968 kVA
2	Power Factor	0.8
3	Nominal Voltage	6600 V
4	Rated Current (In) Amp	735A
5	Voltage adjustment Range %	+5 %
6	Frequency (Hz)	50 Hz
7	Speed (RPM)	750 RPM
8	Overspeed(RPM)	900 RPM
9	Continuous Short circuit Current	>2.5 X In
10	Insulation class	F
11	Temperature rise	F
12	Cooling method	Air cooled
13	Enclosure	IP 23
14	Standard	IEC60034

TECHNICAL SPECIFICATION – WHRBS:

Sr. No.	Description	Details
1	Make	Thermax, Pune
2	Type	Water tube, single drum, Re-circulation
3	Date of Commissioning	20/05/2011
4	Exhaust gas Quantity Kg/hr.	38520
5	Exhaust gas inlet temperature Deg. C	394
6	Exhaust gas Outlet temperature Deg. C	164
7	Exhaust gas Pressure drop from damper inlet to chimney inlet mmWc	140
8	Feed Water Temperature Deg. C	95@ Economiser inlet
9	Losses Considered	2% Radiation & 1% Blow down
10	Waste Heat Source	Exhaust Gas From gas Engine
11	Steam gen Capacity of Each WHRB in Kg/Hr.	4300 Kg/ Hr.
12	Heating surface area	1500Sq. Mtr
13	Steam Pressure Kg/cm ² (g)	13 kg/cm ² (g)
14	Steam Temperature Deg. C	Saturated
15	Exhaust gas composition % Vol	CO ₂ -4.65, H ₂ O-11.6, N ₂ -72.5, O ₂ -10.2

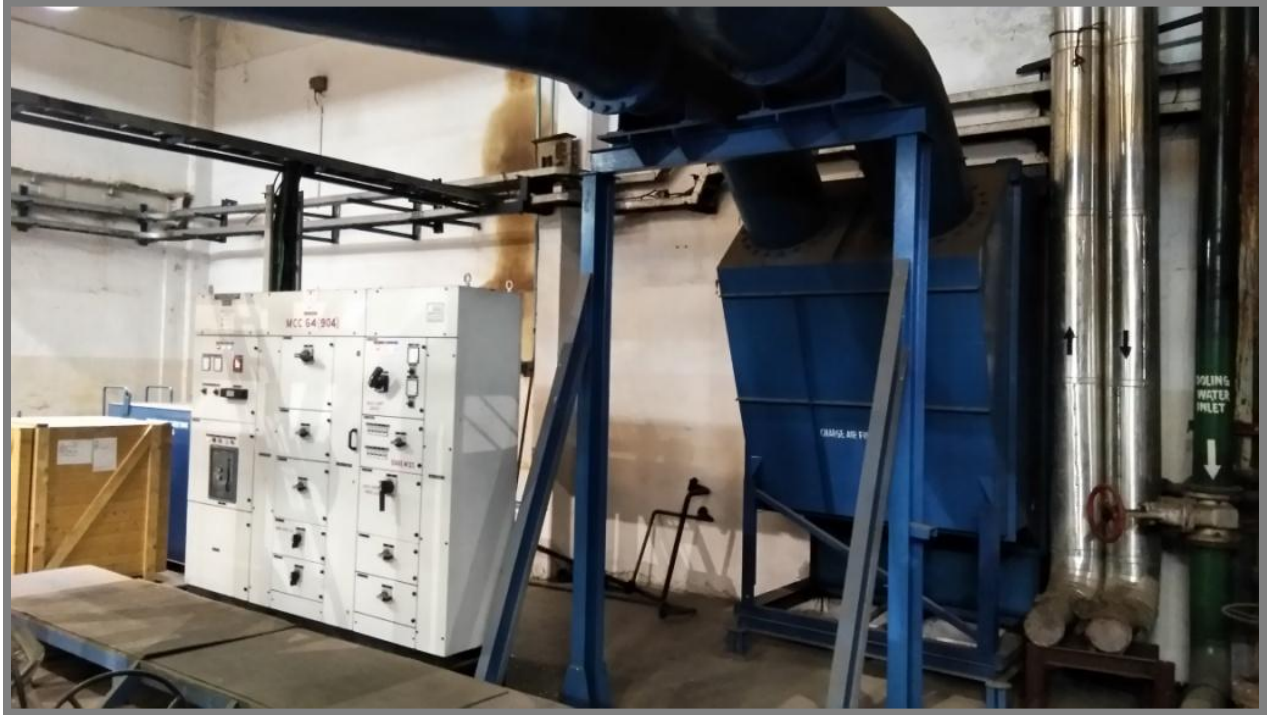
SCOPE OF SUPPLY:

Sr. No.	Name of Equipment	Qty.	Remarks
1	Complete Gas Engine with Alternator sef. Capacity 6.375 Mw each	2 Nos.	Engine - Wartsila make & Alternator - AVR make
2	Gas regulating unit	2 Nos.	RMG make
3	Oil bath fitter unit	2 Nos.	
4	Charge air silencers	2 Nos.	
5	Gas Filtration unit	1 No.	
6	Maintenance Water Tank capacity 5000 ltrs each	1 No.	
7	Exhaust gas ventilation unit	2 Nos.	
8	Engine Pipe module	2 Nos.	Wartsila make
9	Engine jacket water cooling PHE	2 Nos.	Alga Laval make
10	Crank case breathers	2 Nos.	
11	Jacket water expansion tanks, capacity 300 ltrs each	2 Nos.	
12	Exhaust gas piping	2 sets	
13	Completes Waste Heat Recovery Boiler set capacity 4.3 TPH each	2 Nos.	Make – Thermax
14	WHRB Re-circulation pumps	4 Nos.	Make Suzler
15	WHRB exhaust gas diverter dampers	2 Nos.	Make – Indira Dampers
16	WHRB Electrical panels	2 Nos.	
17	WHRB steam drums	2 Nos.	
18	WHRB exhaust gas ducting	2 sets	
19	Gas engine Auxiliary electrical panels	2 Nos.	
20	Gas engine control panels	2 Nos.	
21	Gas Engine synchronization panel	1 No.	
22	Wartsila WOIS system with PC	1 No.	
23	Wartsila WISE system with PC	1 No.	
24	Gas Engine structure & platforms	2 Nos.	
25	WHRB Structure & platforms	2 Nos.	
26	Exhaust gas Chimneys (30 mtrs each)	2 Nos.	
27	Gas/air/oil piping	Lot	

PHOTOGRAPHS:











NITIN CORPORATION