

**NITIN CORPORATION**

402, 4<sup>th</sup> Floor,  
Bezzola Commercial Complex,  
Sion – Trombay Road,  
Chembur,  
Mumbai – 400071,  
India.

WEB: [www.corponit.com](http://www.corponit.com)

E – MAIL: [enquiry@corponit.com](mailto:enquiry@corponit.com)  
[nitincorporation@yahoo.com](mailto:nitincorporation@yahoo.com)

FAX : +91 - 22 - 25235386  
PH (O) : +91 - 22 - 25234478/55973677

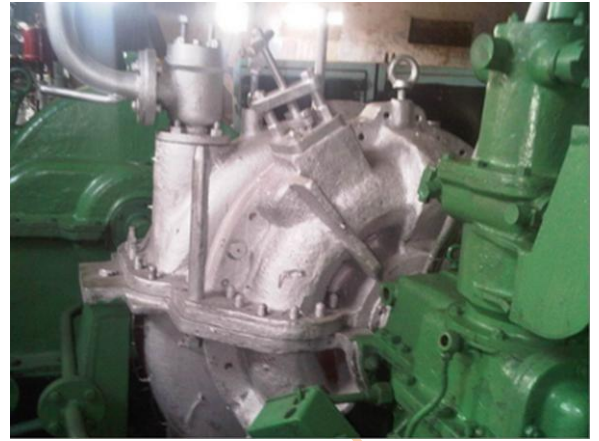
**THE FOLLOWING TURBINE IS AVAILABLE FOR SALE WITH US EX-STOCK WITH IMMEDIATE DELIVERY:**

**One No. - 1500 kW (1875 kVA), Triveni (India) make Exhaust Pressure type Steam Turbine ONLY, as per the following technical specifications:**



### **TURBINE DETAILS:**

Make	:	Triveni Engg., India
Type	:	550 mm, Impulse type, Axial Flow
Stages	:	Multistage, Rateau Stages
Year Of Make	:	1988
Capacity	:	1500 kW
kVA	:	1875 kVA
Inlet Steam Pressure	:	16 kg/cm <sup>2</sup> (Can be increased to 21 kg/cm <sup>2</sup> with minor modifications.)
Inlet Steam Temperature	:	325 Deg. C.
Exhaust Steam Pressure	:	0.7/1.3 kg/cm <sup>2</sup>
Speed	:	8250 RPM
Trip Speed	:	9075 RPM



The above Steam Turbine is complete with the following auxiliaries & accessories:

- Main Oil Pump.
- Auxiliary Oil Pump with Motor.
- Hand Priming Pump
- Governing System.
- Oil Filter & Oil Pipelines.
- 1500 kW Turbine Control Panel.
- AOP Control.
- Steam Gauges.
- Temperature Gauges.
- Oil Control Gauges.

**NOTE:** The above Steam Turbine is in good condition & can be presently inspected in our warehouse in Mumbai.