

NITIN CORPORATION

402, 4th Floor,
Bezzola Commercial Complex,
Sion – Trombay Road,
Chembur,
Mumbai – 400071,
India.

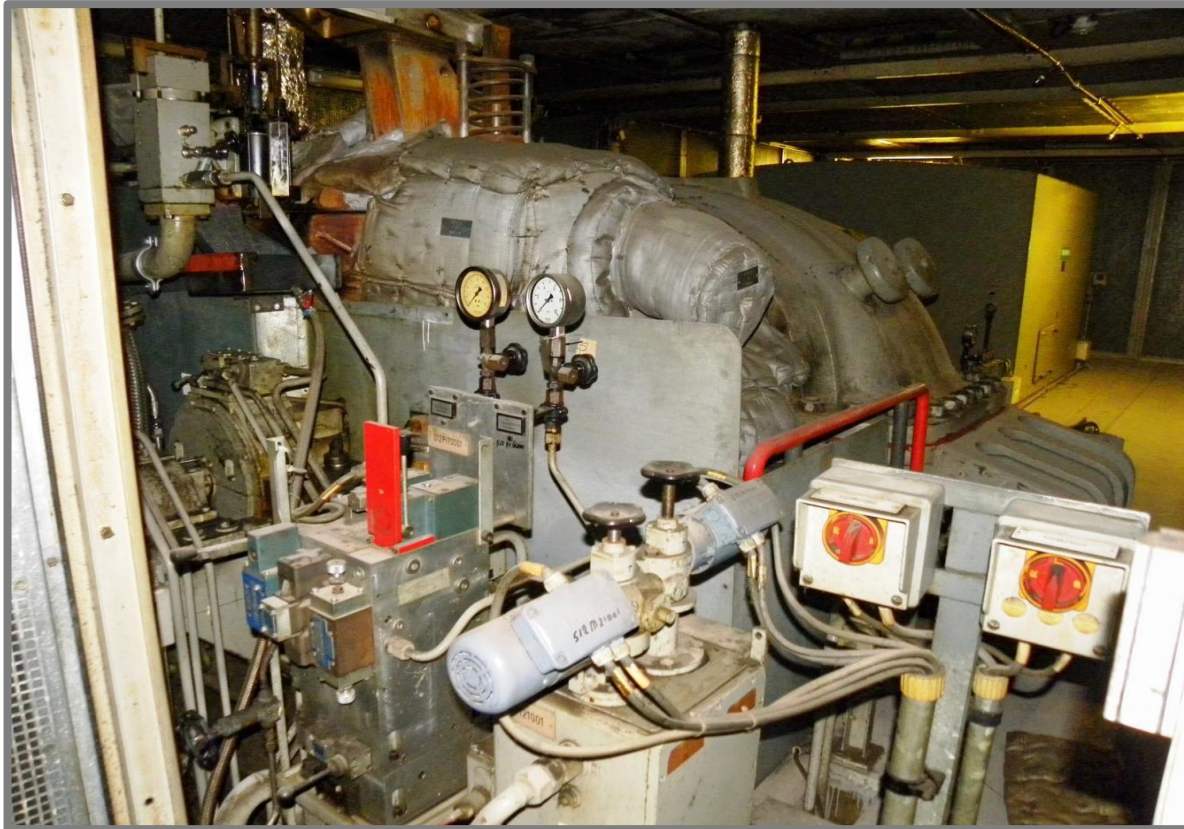
WEB: www.corponit.com

E – MAIL: enquiry@corponit.com
nitincorporation@yahoo.com

FAX : +91 - 22 - 25235386
PH (O) : +91 - 22 - 25234478/67973677

THE FOLLOWING CONDENSING TYPE STEAM TURBINE GENERATOR SET IS AVAILABLE FOR SALE WITH IMMEDIATE DELIVERY:

1 No. – 10,700 kW SIEMENS (1990) make, Condensing Steam Turbine Generator Set, having the following technical specifications:



Year of Manufacture	:	1990
Year Commissioned	:	2001
Condition	:	Good
Status	:	Installed on Foundation, Europe

**NITIN CORPORATION
MUMBAI.**

**1 No. 10,700 kW Siemens (1990) make Condensing
STG Set**

STEAM TURBINE DETAILS:

Manufacturer	:	Siemens AG, Germany
Year of Make	:	1990
Rated Power	:	8,789 kW
Maximum Continuous Power	:	9,880 kW
Rated Speed	:	7,538 rpm
Normal Inlet Flow	:	40,000 kg/h
Maximum Inlet	:	47,513 kg/h
Normal Inlet Pressure	:	38 bar abs.
Maximum Continuous Inlet Pressure	:	41.8 bar abs.
Normal Bleed Pressure	:	3.76 bar abs.
Normal Bleed Flow	:	7,632 kg/h
Normal Inlet Temperature	:	390 C
Max. Cont. Inlet Temperature	:	398 C
Normal Exhaust Press	:	0.07 bar abs.
Normal Exhaust Flow	:	32,368 kg/h
Maximum Continuous Exhaust Flow	:	39,899 kg/h

SPEED REDUCTION GEAR DETAILS:

Manufacturer	:	Siemens AG, Germany
Year of Construction	:	1990
Type	:	Parallel Shaft
Rated Power	:	10,716 kW
Input Speed	:	7,538 rpm
Output Speed	:	1,500 rpm
Gear Ratio	:	5.03:1
Service Factor	:	To be advised

GENERATOR DETAILS:

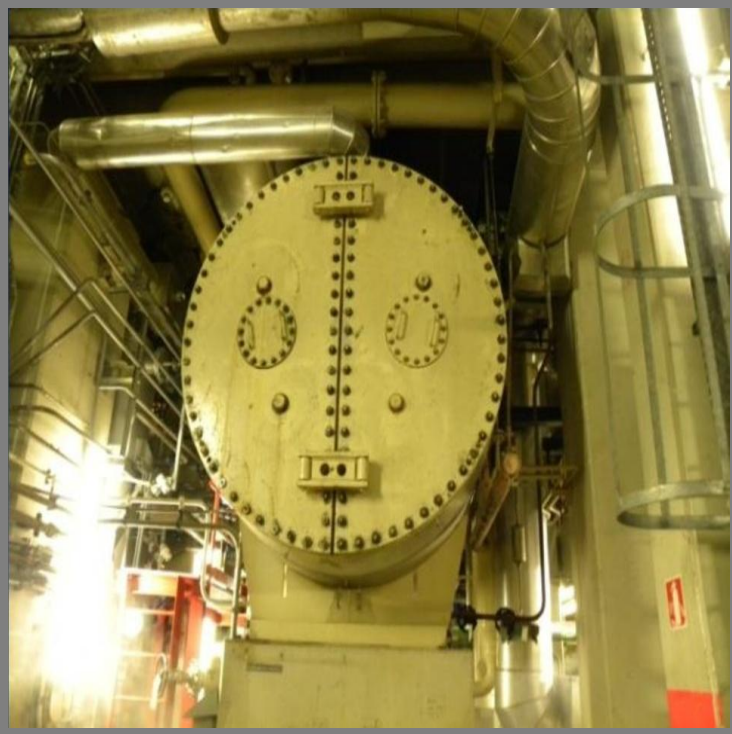
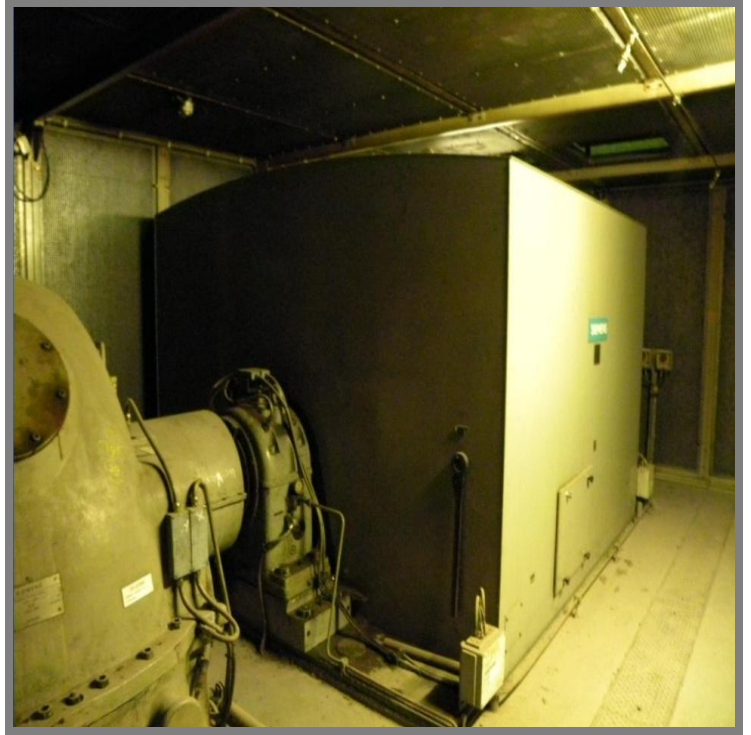
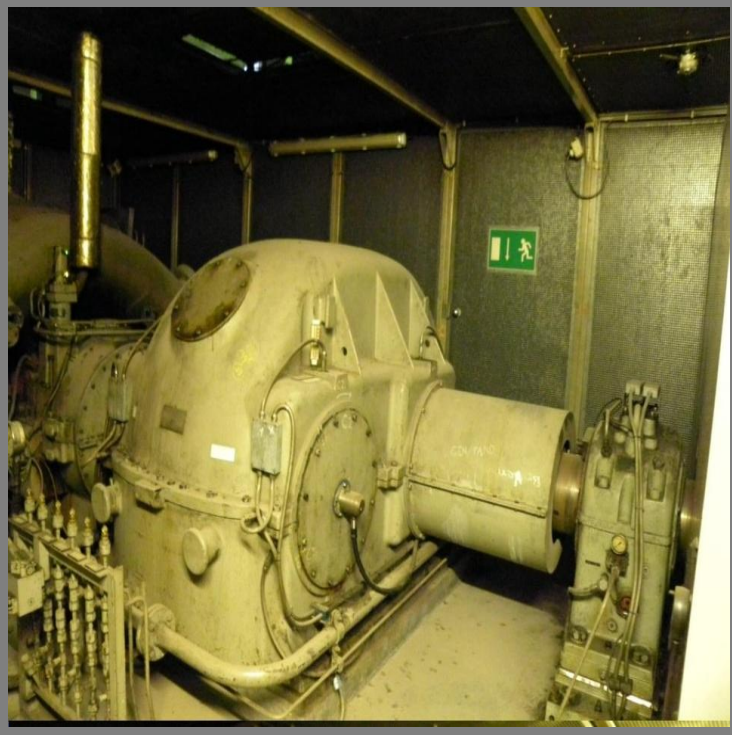
Manufacturer	:	Siemens AG, Germany
Year of Construction	:	1990
Type	:	Synchronous AC Generator
Rated Power	:	13,460 kVA
Power Factor	:	0.8
Rated Power	:	10,768 kW
Voltage	:	12,800 V +/- 5%
Current	:	607 A
Number of Poles	:	4
Rated Speed	:	1,500 rpm
Phases	:	3
Frequency	:	50 Hz
Protection	:	IPR44
Insulation Class	:	F / F
Connection	:	Y
Ambient	:	40 C

PHOTOS:



**NITIN CORPORATION
MUMBAI.**

**1 No. 10,700 kW Siemens (1990) make Condensing
STG Set**



**NITIN CORPORATION
MUMBAI.**

**1 No. 10,700 kW Siemens (1990) make Condensing
STG Set**