

NITIN CORPORATION

402, 4th Floor,
Bezzola Commercial Complex,
Sion – Trombay Road,
Chembur, Mumbai – 400071,
India .

WEB : www.corponit.com

EMAIL : nitincorporation@yahoo.com
enquiry@corponit.com

PH (O) : +91 - 22 - 25234478/67973677
FAX : +91 - 22 - 25235386

THE FOLLOWING COMBINED CYCLE POWER PLANT IS AVAILABLE FOR SALE WITH US WITH IMMEDIATE DELIVERY:

1 No. - 80 MW GE LM 2500+ Combined Cycle Power Plant having the following technical specifications:

Combined Cycle Natural Gas Power Plant project is based on four gas turbine generator sets incorporated with four heat recovery steam generators (HRSGs) of once through (OTSG) type, two steam turbine generator sets, two air cooled condensers (ACC) and auxiliary systems for base load operation with load cycling capability.

The Plant's cooling requirements are satisfied by utilizing an aircooled condenser for the steam turbine, and an equipment cooling water (ECW) system, utilizing an air-cooled heat exchanger for the auxiliary systems.

The water is produced in the water treatment plant, from raw water supplied from a dam, located at a distance of 7 km from the Plant site.

The generated energy is delivered to grid via existing 154 kV transmission line to local substation. The terminal point is at the 154 kV switchyard gantry including conductor and earth wire span to the first tower.

Station auxiliary supply for the Plant is from two (2) station auxiliary transformers; one (1) of which is connected to the 11 kV switchgear of Gas Turbine Generator No. 1 and the other one (1) to the 11 kV switchgear of Gas Turbine Generator No. 2. Electric supply for normal start-up, shut down and maintenance periods of the Plant is available from grid operator via back feed through the GTG step-up transformers.

GENERAL PLANT LAYOUT
EQUIPMENT TECHNICAL DETAILS OF PLANT

BRAND NAME : **GENERAL ELECTRIC - NORWAY PACKED**
MODEL (LABEL) : **LM2500 Plus PK- MDWG03**
POWER : **30 MW**
START UP DATE : **Oct 14,2005**
TURBINE PRODUCTION DATE : **2002**
FUEL TYPE : **NATURAL GAS & LIQUID FUEL(DUAL)**
GENERATOR BRAND NAME : **ABB**
GENERATOR COOLING : **WATER COOLED**
GENERATOR REVOLUTION : **1.500 rpm**
GENERATOR POWER : **37.800 KVA**
WEIGHT : **55.5 MT**
GEN. PRODUCTION DATE : **2002**

2 X GE LM2500+ Gas Turbines & Nuovo Pignone Steam Turbine

	Overhaul Run hours	Running Hours @ 10.July.20 17	Run hours after Overhaul	Start @ Overhaul	Start @ 10 .July .2017	Start after Overhaul	Explanation
GT1	49.892	53.686	3.794	1.544	1.857	313	-
GT2	50.026	55.058	5.032	1.560	1.843	283	-
ST1	Not overhauled	56.000	56.000	1.570	1.900	330	Numbers are estimated by referencing GT running hours

<i>BRAND NAME</i>	<i>IST (INNOVATIVE STEAM TURBINES) CANADA</i>
<i>TYPE</i>	<i>OTSG (ONCE THROUGH)</i>
<i>PRODUCTION DATE</i>	<i>2002</i>
<i>HP STEAM PRESSURE</i>	<i>54 barg</i>
<i>HP STEAM TEMPERATURE</i>	<i>475 °C</i>
<i>HP FLOW</i>	<i>9,89 kg/sec</i>
<i>LP STEAM PRESSURE</i>	<i>3,98 barg</i>
<i>LP STEAM TEMPERATURE</i>	<i>245 C</i>
<i>LP FLOW</i>	<i>3,98 kg/sec</i>
<i>PREHEATER PRESSURE</i>	<i>22,9 barg</i>
<i>PREHEATER TEMP</i>	<i>115 C</i>
<i>PREHEATER WATER FLOW</i>	<i>5,5 kg/sec</i>

<i>BRAND NAME</i>	<i>GE NUOVO PIGNONE ITALY</i>
<i>MODEL</i>	<i>HNK 50/80</i>
<i>POWER</i>	<i>21,99 MW</i>
<i>REVOLUTION</i>	<i>5.050 rpm</i>
<i>CONDANSATE TEMP</i>	<i>49 °C</i>
<i>CONDANSATE PRESSURE</i>	<i>-0,8816 barg</i>
<i>TURBINE WEIGHT</i>	<i>72.000 kg</i>
<i>GENERATOR WEIGHT</i>	<i>45200 kg</i>
<i>GEAR BOX BRAND NAME</i>	<i>FLENDER</i>
<i>GEAR BOX REVOLUTION</i>	<i>5.050/1.500 rpm</i>
<i>GENERATOR BRAND NAME</i>	<i>ABB</i>
<i>POWER</i>	<i>30.630 KVA</i>
<i>WEIGHT</i>	<i>46.000 kg</i>
<i>PRODUCTION DATE</i>	<i>2002</i>

GAS TURBINE TRANSFORMER – Quantity = 2

<i>154/11 KV TRANSFORMER POWER</i>	<i>40 MVA</i>
<i>MANUFACTURER</i>	<i>ABB</i>
<i>START UP DATE</i>	<i>09.06.2005</i>

STEAM TURBINE TRANSFORMER – Quantity = 1

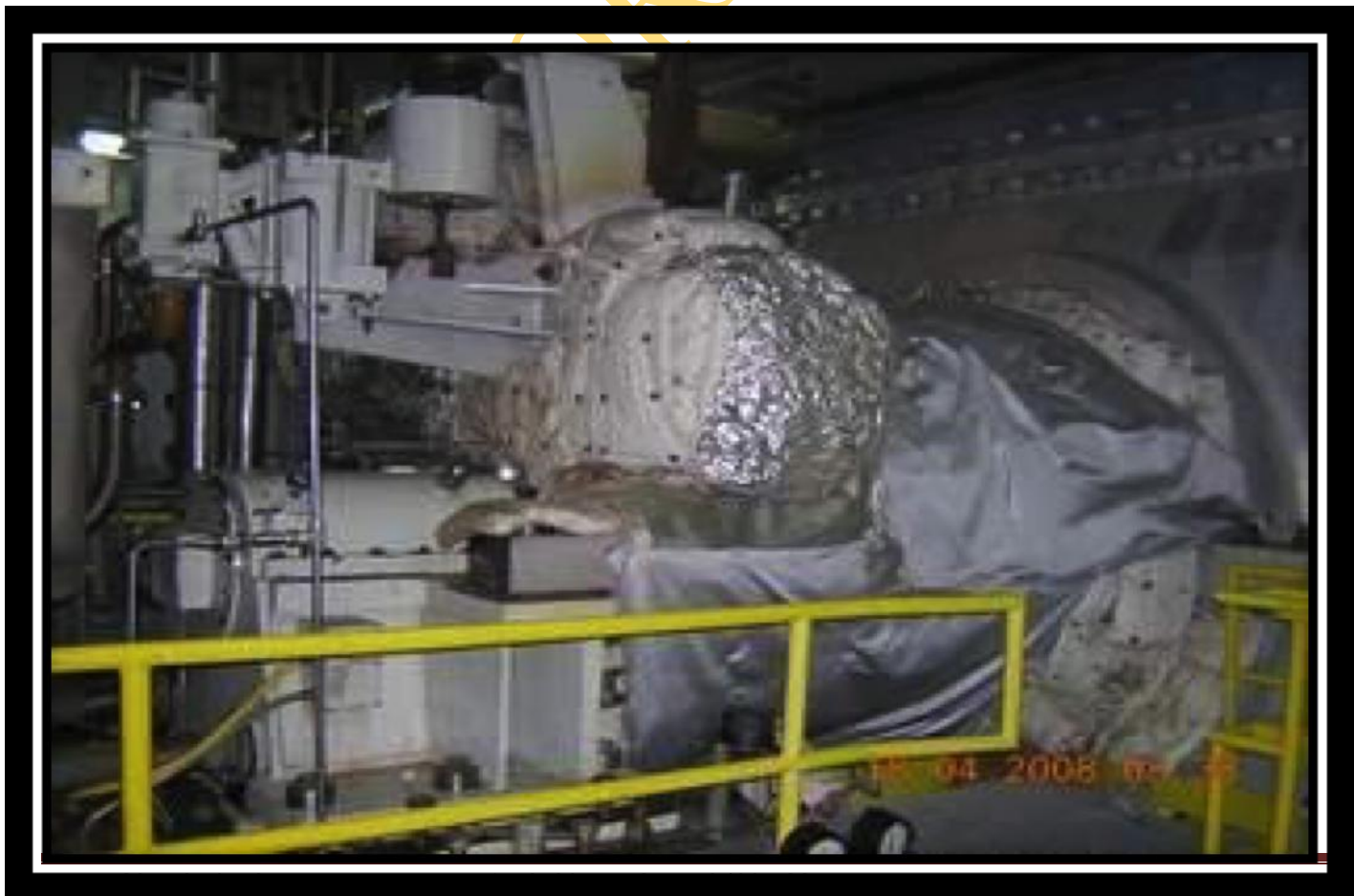
<i>154/11 KV TRANSFORMER POWER</i>	<i>31 MVA</i>
<i>MANUFACTURER</i>	<i>ABB</i>
<i>START UP DATE</i>	<i>13.06.2005</i>
<i>DRY TYPE</i>	
<i>11/0,4 KV TRANSFORMER POWER</i>	<i>2500 KVA</i>
<i>BRAND NAME</i>	<i>ABB</i>
<i>START UP DATE</i>	<i>09.06.2005</i>

<i>MANUFACTURER</i>	<i>HAMON / USA</i>
<i>CELL</i>	<i>5 EA</i>
<i>TYPE</i>	<i>TEK SIRALI</i>
<i>FAN MOTOR POWER</i>	<i>75 kW</i>
<i>COOLING</i>	<i>AIR</i>
<i>STEAM FLOW</i>	<i>25,64 kg/s</i>
<i>STEAM TEMPERATURE</i>	<i>45 °C</i>
<i>STEAM PRESSURE</i>	<i>62,5 mbara</i>
<i>FAN GEAR BOX MANUFACTURER</i>	<i>HANSEN</i>
<i>GEAR BOX POWER</i>	<i>190 kW</i>
<i>FAN MOTOR REVOLUTION</i>	<i>1485-297 rpm</i>





RF



-Mumbai

