

**NITIN CORPORATION**

402, 4<sup>th</sup> Floor,  
Bezzola Commercial Complex,  
Sion – Trombay Road, Chembur,  
Mumbai – 400071,  
India .

WEB : [www.corponit.com](http://www.corponit.com)

E – MAIL : [nitincorporation@yahoo.com](mailto:nitincorporation@yahoo.com)  
[enquiry@corponit.com](mailto:enquiry@corponit.com)

PH (O): +91 - 22 - 25234478/67973677  
FAX : +91 - 22 - 25235386

**THE FOLLOWING BACK PRESSURE TYPE BOILER FEED WATER PUMP  
STEAM TURBINE DRIVE IS AVAILABLE FOR SALE WITH US WITH IMMEDIATE  
DELIVERY:**

**1 No. – 160 HP TRIVENI (1987) make Boiler Feed Water Pump Drive Steam  
Turbine having the following technical specifications:**

**TECHNICAL DETAILS:**

**TURBINE DETAILS:**

Make	:	TRIVENI
Type	:	18ZS1
Year of manufacture	:	1987
Capacity	:	160 HP
Inlet Steam Pressure	:	30 Kg/Cm <sup>2</sup>
Inlet Steam Temperature	:	335°/370°C.
Exhaust Steam Pressure	:	0.95Kg/Cm <sup>2</sup>
Speed	:	3000 RPM

**NOTE:**

The above Turbine is in excellent condition and can be inspected in our warehouse.

**GENERAL TERMS OF BUSINESS**

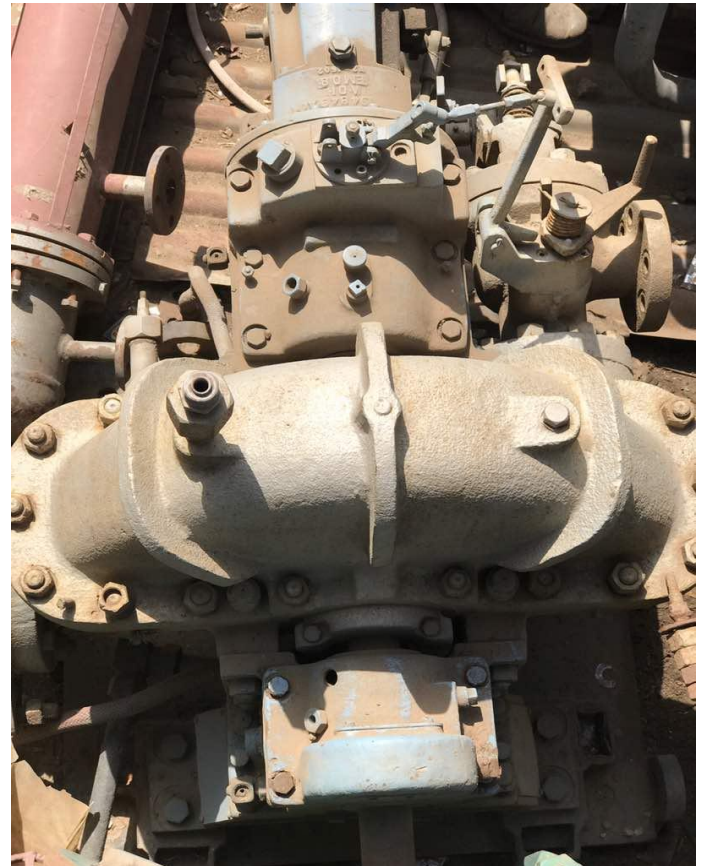
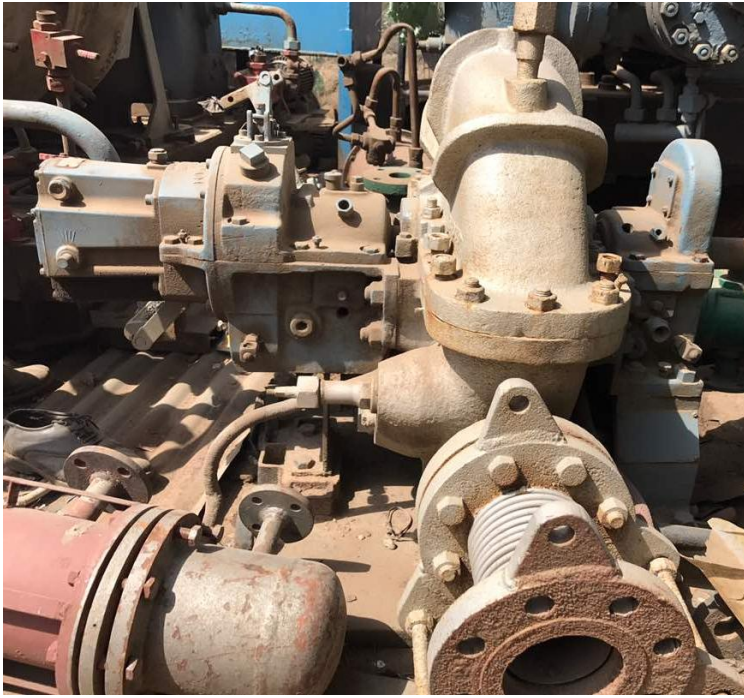
Taxes : Whatever as applicable will be charged extra. Tax Declaration forms to be handed over before delivery.

Terms: One-third with order; balance + sales tax before delivery.

Delivery: Immediate.

Offer: Strictly subject to prior sale and/or our final confirmation.

**PHOTOS:**



*NITIN CORPORATION,  
MUMBAI.*

*1 No. 160 HP Triveni (1987)  
Feed Water Pump drive Steam Turbine*