

NITIN CORPORATION

402, 4th Floor,
Bezzola Commercial Complex,
Sion – Trombay Road,
Chembur,
Mumbai – 400071,
India.

WEB: www.corponit.com

E – MAIL: enquiry@corponit.com
nitincorporation@yahoo.com

FAX : +91 - 22 - 25235386

PH (O) : +91 - 22 - 25234478/67973677

**THE FOLLOWING EXTRACTION - CONDENSING TYPE STEAM TURBINE
GENERATOR SET IS AVAILABLE FOR SALE WITH US WITH IMMEDIATE
DELIVERY:**

**1No. – 16.8 MW (1964) make, Condensing Type Steam Turbine
Generator Set, (with single controlled extraction) having the following
technical specifications:**



Year of Manufacture
Condition
Status

:1964
:Turbine Good, Generator Damaged
:Installed on Foundation

**NITIN CORPORATION
MUMBAI.**

**1No. – 16.8 MW (1964) make,
- 1 - Condensing Type STGSet**

TURBINE DETAILS:

Manufacturer :Siemens Schuckertwerke AG

Rating:

Most Economical :15,260 kW
Maximum Continuous :16,800 kW

Design Inlet Flow :100,000 kg/h
(fullextraction)

Inlet Pressure:

Design :44 bara
Maximum Continuous :50 bara

Inlet Temperature:

Design :450 °C
Maximum Continuous :475 °C

Extraction Pressure:

Design :4.8 bara

Rated Speed :3,000 RPM

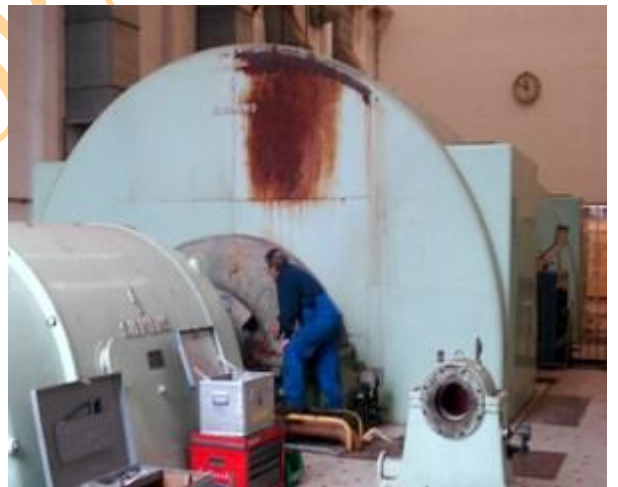
Performance

Case 1 (zero extraction):

At Design Conditions
Inlet Flow :40,000 kg/h
Power :9,500 kW

Case 1 (full extraction):

At Design Conditions
Inlet Flow :100,000 kg/h
Extraction Flow :95,000 kg/h
Power :16,800 kW



GENERATOR DETAILS:

Manufacturer	:Siemens Schuckertwerke AG
Apparent Power	:16,800 kVA
Active Power	:13,440 kW
Power Factor	:0.8
Rated Speed	:3,000 RPM
Rated Voltage	:6,300 V
Rated Current	:1,540 A
Phases	: 3
Phase Connection	:Star
Frequency	:50 Hz

**Note:Short in the stator winding,
as shown in the opposite photograph.**

