

NITIN CORPORATION

402, 4th Floor,
Bezzola Commercial Complex,
Sion – Trombay Road,
Chembur,
Mumbai – 400071,
India.

WEB : www.corponit.com

E – MAIL : enquiry@corponit.com
nitincorporation@yahoo.com

PH (O) : +91 - 22 - 25234478/67973677

FAX : +91 - 22 - 25235386

THE FOLLOWING CONDENSING TYPE STEAM TURBINE GENERATOR SET IS AVAILABLE FOR SALE WITH US WITHIMMEDIATE DELIVERY:

1 No. - 16.3 MW ALSTOM (2002) make, Condensing type Steam Turbine Generator Set having the following technical specifications:



| | |
|----------------------------|---------------------------------|
| Year of Manufacture | :2002 |
| Year Retired | :2013 |
| Condition | :Excellent |
| Status | :Installed on Foundation |

TURBINE DETAILS:

Make :ALSTOM BRNO

Model No. :ST3-C.V56A

Rated Power:

Normal :15,250 kW

Maximum Cont :16,300 kW

Inlet Flow:

Normal :51,790 kg/h

Maximum Cont :56,200 kg/h

Inlet Pressure:

Normal :45 bar abs.

Inlet Temperature:

Normal :440⁰C

LP Admission:

Pressure (Normal) :6 bar abs.

Temperature (Normal):243⁰C

Flow (Min / Max) :0/14,400 kg/h

Exhaust Pressure:

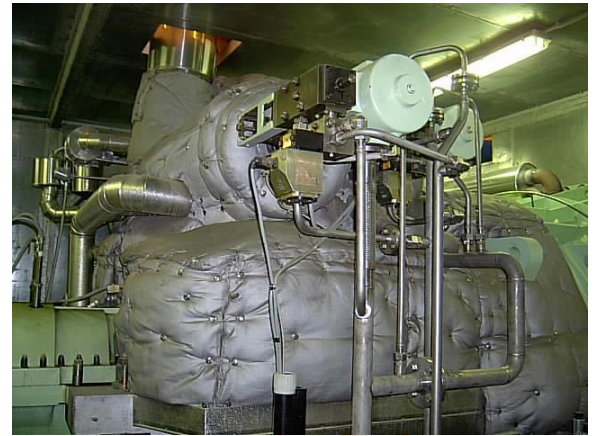
Normal :0.085 bar abs.

Maximum Cont :0.2 bar abs.

Exhaust Flow:

Maximum Cont. :67,600 kg/h

Rated Speed :5,952 RPM



GEARBOX DETAILS:

Manufacturer :**Renk**
Model Number :TBE-630
Rated Power :17,000 kW
Input Speed :5,95200 RPM
Output Speed :1,500 RPM
Ratio :3.97:1

GENERATOR DETAILS:

Manufacturer :**ABB Motors AB**
Model Number :AMS 900LH
Rated Power :20,375 kVA
Power Factor :0.8
Active Power :16,300 kW
Rated Voltage :11,000 V +/- 5%
Rated Current :1,069 A
Phases :3
Rated Speed :1,500
Frequency :50 Hz
Insulation Class:
Stator & Exciter :F
Rotor :H

