

**NITIN CORPORATION**

402, 4<sup>th</sup> Floor,  
Bezzola Commercial Complex,  
Sion – Trombay Road,  
Chembur,  
Mumbai – 400071,  
India.

WEB: [www.corponit.com](http://www.corponit.com)

E – MAIL: [enquiry@corponit.com](mailto:enquiry@corponit.com)  
[nitincorporation@yahoo.com](mailto:nitincorporation@yahoo.com)

FAX : +91 - 22 - 25235386  
PH (O) : +91 - 22 - 25234478/67973677

**THE FOLLOWING CONDENSING TYPE STEAM TURBINE GENERATOR SET  
AVAILABLE FOR SALE WITH US WITH IMMEDIATE DELIVERY:**

**1 No. – 10.33 MW Franco Tosi (1996) make, Condensing Steam Turbine Generator Set having the following technical specifications:**



<b>Year of Manufacture</b>	<b>:1996</b>
<b>Year Retired</b>	<b>:2011</b>
<b>Condition</b>	<b>:Excellent</b>
<b>Operating Hours</b>	<b>:110,000</b>
<b>Status</b>	<b>:Installed on foundation</b>

### **TURBINE DETAILS:**

Manufacturer : **Franco Tosi**

#### **Rating:**

Most Economical : 10,330 kW  
Maximum Cont. : 11,450 kW

#### **Inlet Flow:**

Rated : 52,000 kg/h

#### **Inlet Pressure:**

Rated : 40 Bar abs.

#### **Inlet Temperature:**

Rated : 370°C

Rated Speed : 6,807 RPM

### **GEARBOX DETAILS:**

Manufacturer : **O.T.G Gusti**

Rating : 12,500 kW

Input Speed : 6,807 RPM

Output Speed : 1,500 RPM

Ratio : 4.538:1

### **GENERATOR DETAILS:**

Manufacturer : **Ansaldo Industria S.P.A**

Apparent Power : 12,913 kVA

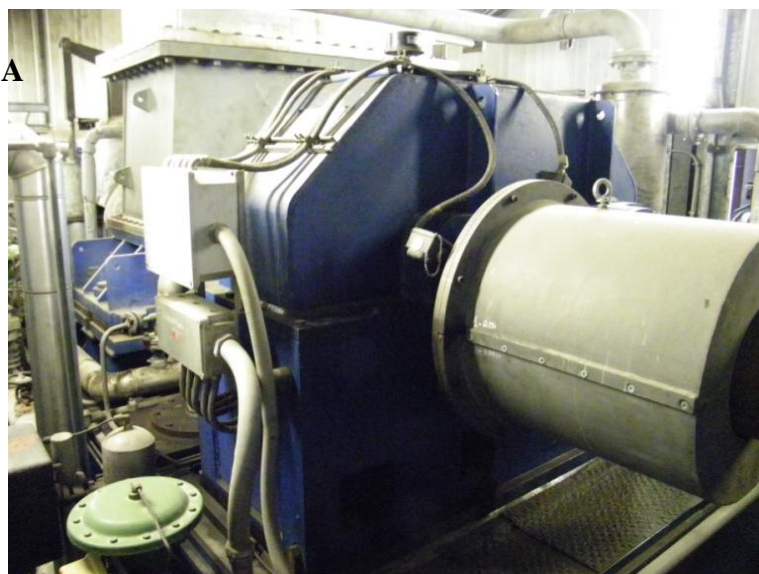
Active Power : 10,330 kW

Power Factor : 0.8

Speed : 1,500 RPM

Voltage : 15,000 ±5%

Current : 497 A



Phases :3  
Connection :Star  
Excitation Voltage :115.9 V  
Excitation Current :5.1 A  
Coolant Air  
Frequency :50 Hz

