



Tel: Off : +91 22 2523 4478 / 67973677
Fax : +91 22 2523 5386
E mail : enquiry@corponit.com
Website : www.corponit.com

DEALERS & IMPORTERS OF POWER PLANTS & ALLIED MACHINERY

402, 4th Floor, Bezzola Commercial Complex, V.N. Purav Marg, Sion Trombay Road, Chembur, Mumbai – 400071, INDIA.

1 x 6.87 MW AEG-KANIS make Condensing type Steam Turbine :

Year of construction	:	1967
Type	:	G 50 K
Output (turbine coupling)	:	6870 kW
Speed	:	8400 rpm
Speed-range	:	5600 - 8400 rpm
Live steam pressure	:	36 bar - max. 41.5 bar
Live steam temperature	:	321 °C - max. 400 °C
Extraction / Induction	:	3.5 bar (0 - 7 t/h)
Exhaust pressure	:	0.135 bar
Steam flow	:	35 t/h
Rotation	:	CCW

ORIGINAL PERFORMANCE FIGURES

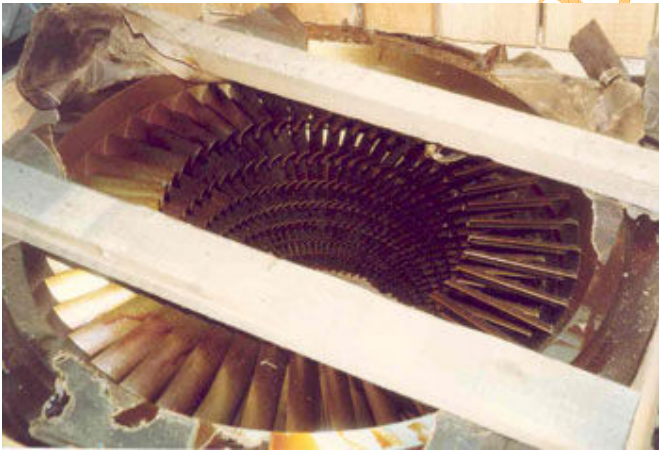
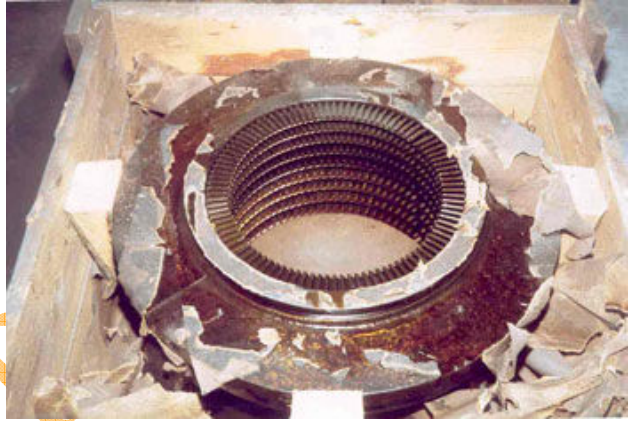
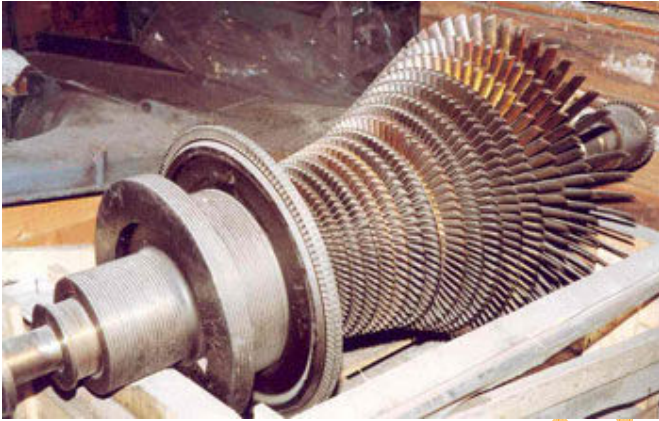
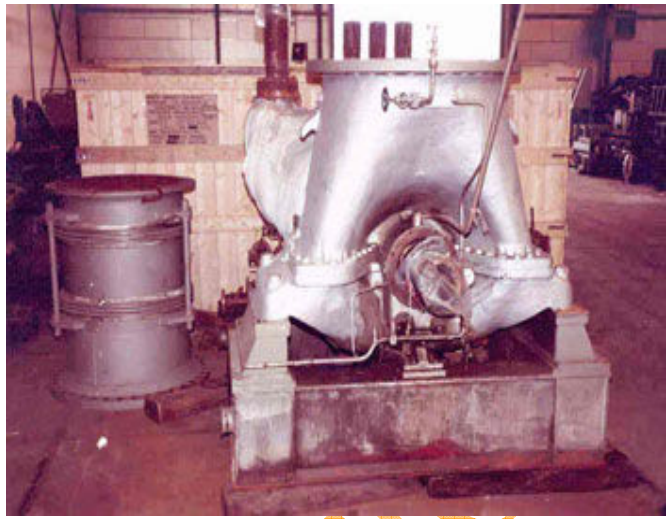
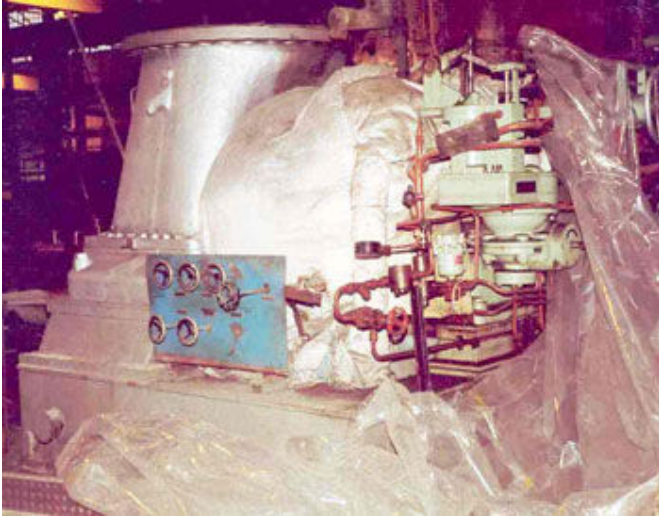
WHEN OPERATED AT 38 BAR / 380 °C LIVE STEAM AND 0.13 BAR EXHAUST PRESSURE:

Brake horse power	9100	7920	7940	8200	HP
Speed	8000	7450	7450	8000	rpm
Steam flow	35	30.8	28	35	t/h
Extraction flow (3.7 bar)	0	0	7	0	t/h
Induction flow (4.5 bar)	0	0	0	6.5	t/h
Spec. steam consumption	3.85	3.86	3.53	4.27	kg/HPh

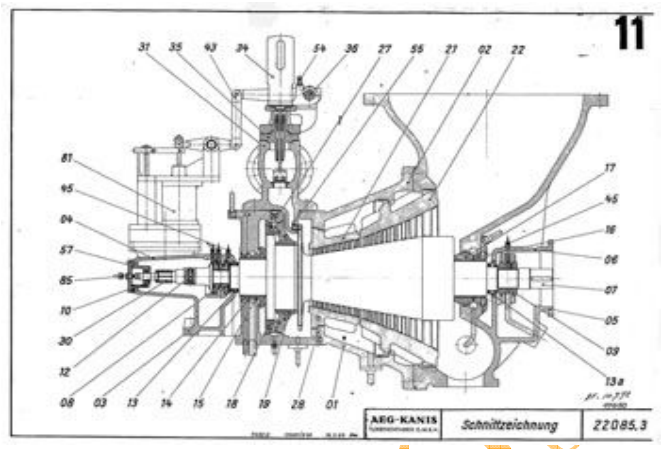
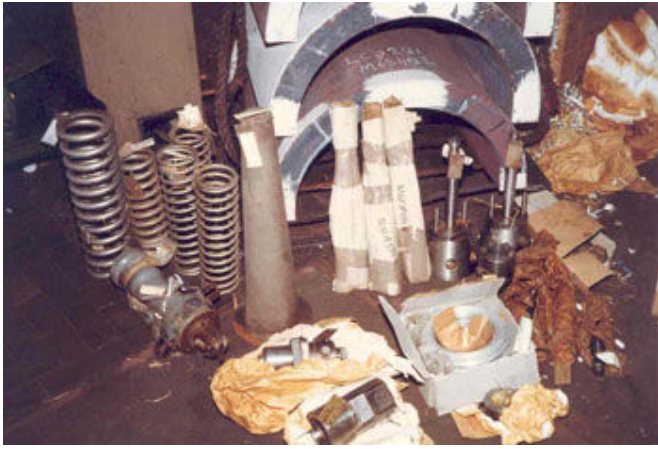
SCOPE OF SUPPLY:

The scope of supply comprises the turbine mounted on a frame, the exhaust expansion piece and a very large spare parts stock including spare rotor, both blade carriers, bearings, labyrinth and gland bushes, etc. The oil unit and the condenser are not included.

PRODUCT IMAGES :



MI



NITIN CORPORATION