



Tel: Off : +91 22 2523 4478 / 67973677
Fax : +91 22 2523 5386
E mail : enquiry@corponit.com
Website : www.corponit.com

DEALERS & IMPORTERS OF POWER PLANTS & ALLIED MACHINERY

402, 4th Floor, Bezzola Commercial Complex, V.N. Purav Marg, Sion Trombay Road, Chembur, Mumbai – 400071, INDIA.

1 x 4300 kW Peter Brotherhood make Back Pressure type Steam Turbine Generator Set:

TURBINE:

Make : Peter Brotherhood Ltd. (UK)
Type : Multi Stage Turbine - 4 Stages of 18" mean dia.
Serial No. : 36690-A
Year of make : 1974
Capacity : 4250KW
Speed : 9068 RPM
Tripping Speed : 10200/10400 RPM
Inlet Steam Pressure : 580 psig (41 kg/cm²)
Inlet Steam Temperature : 690 Deg. F.
Exhaust Steam Pressure : 85 psig (6 kg/cm²)
Exhaust steam pressure- Min : 70 psig (4.9 kg/cm²)
Exhaust steam pressure- Max : 100 psig (7.04 kg/cm²)
Inlet steam valve dia. : 8 inches
Exhaust steam valve dia. : 14 inches

Driving Through a reduction gearbox having ratio of 9068/1500 RPM,

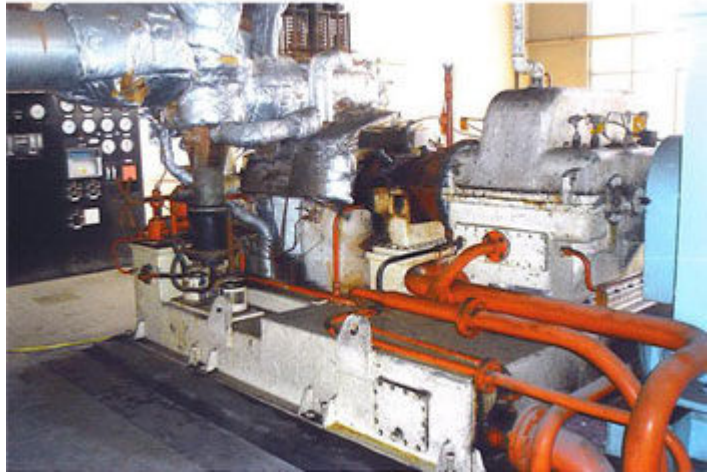
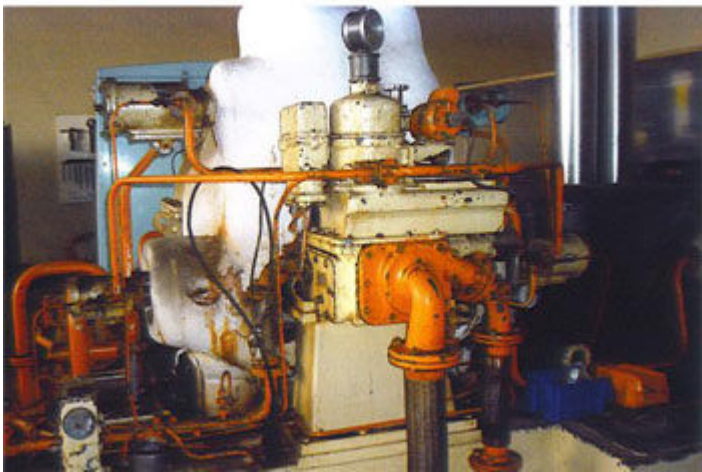
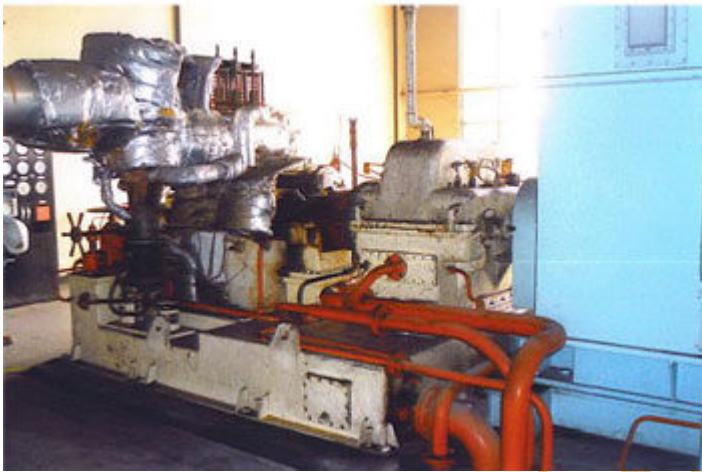
ALTERNATOR :

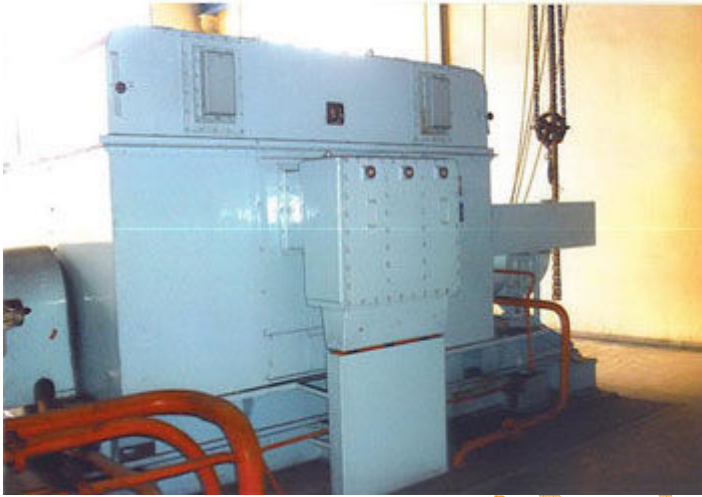
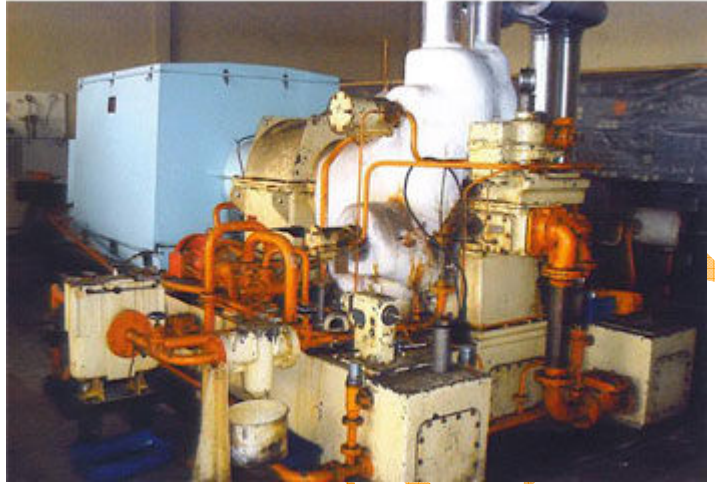
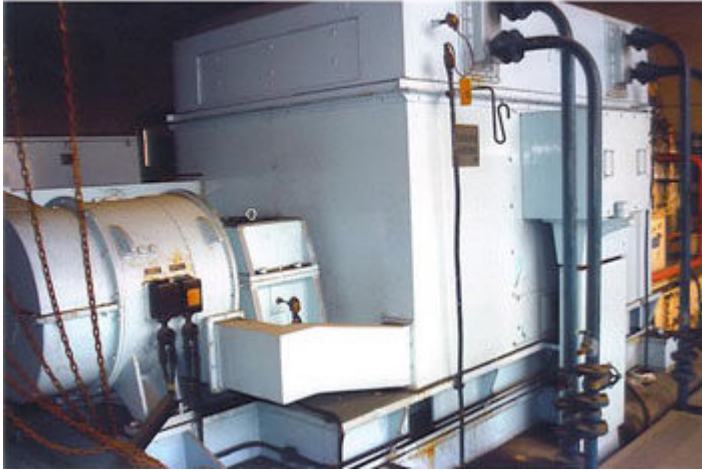
Make : Parson Peebles Ltd
Kw : 4300
Kva : 5050
Rpm : 1500
Amp : 265
Volts : 11000
Phase : 03

P.F : 0.85
Output Conn. : Star
Insulation Class : F
Specification : BS 2613/70
Rating : MCR
Exc. Volts : 49
Exc. Amps. : 403

FLON

PRODUCT IMAGES :





NITIN CO