



Tel: Off : +91 22 2523 4478 / 67973677
Fax : +91 22 2523 5386
E mail : enquiry@corponit.com
Website : www.corponit.com

DEALERS & IMPORTERS OF POWER PLANTS & ALLIED MACHINERY

402, 4th Floor, Bezzola Commercial Complex, V.N. Purav Marg, Sion Trombay Road, Chembur, Mumbai – 400071, INDIA.

1 No. 2700 kW WH Allen make Back Pressure type Steam Turbine Generator Set:

TURBINE:

Make : W.H Allen Sons & Co. Ltd. (UK)
No. : T4/69776
Year : 1969
Kw : 2700
Inlet Steam Pressure : 580 psig (41 kg/cm²)
Inlet Steam Temperature : 690 °F
Exhaust Steam Pressure : 85 psig (6 kg/cm²)
Speed : 12000 RPM

GEARBOX :

Make : Allen Stekhist Epkycltic Gear.
Input Speed : 12000 RPM
Output Speed : 1500 RPM
Capacity : 4050 HP
Ratio : 8 : 1

ALTERNATOR:

Make : Bruce Peebles (UK)
Kva : 3176
Rpm : 1500
Volts : 11000
Amps : 167
Phases : 03
Cycle : 50 Hz

P.F	:	0.85
Rating	:	CMR
Spec.	:	2613/1957
Insulation	:	B
Enclosure	:	CACW
Frame size	:	S 2600 JP
Serial No.	:	92659

D.C Exciter

Amps. 436, Volts 36,

Rectifiers Silicone Diode

Negative Bare type S/O HN 290 SV11000, Quantity 3

Positive Bare type S/O H12302 SV11000, Quantity 3

Bruce Peebles Ltd.

A.C Exciter

(small exciter at back)

K.W 16.8, Kva 17.7, Volts 29, Amp. 352, Ph. 3, 50Hz,

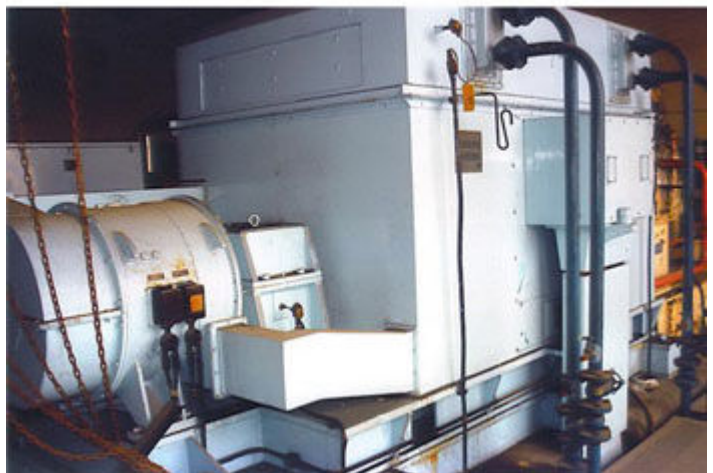
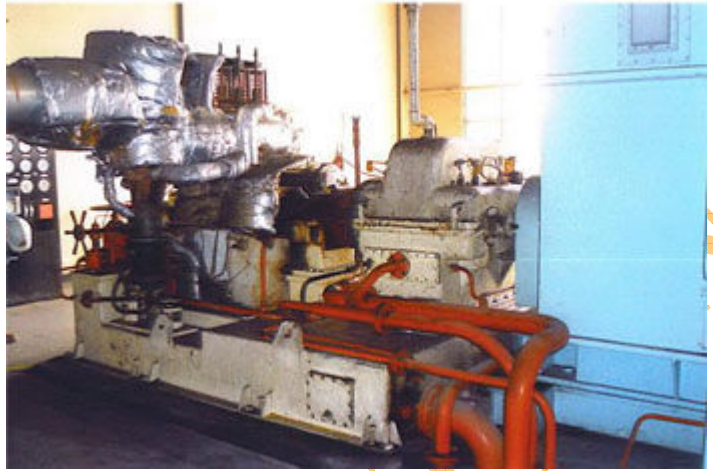
P.F .95, Rpm 1500, Rating CMR, Insulation B,

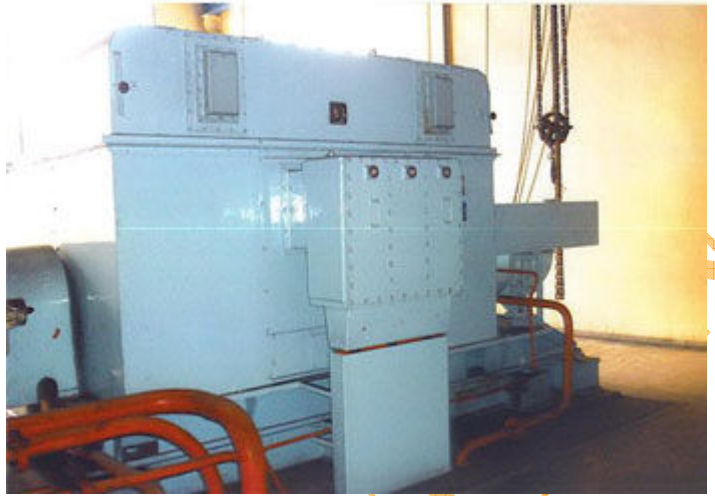
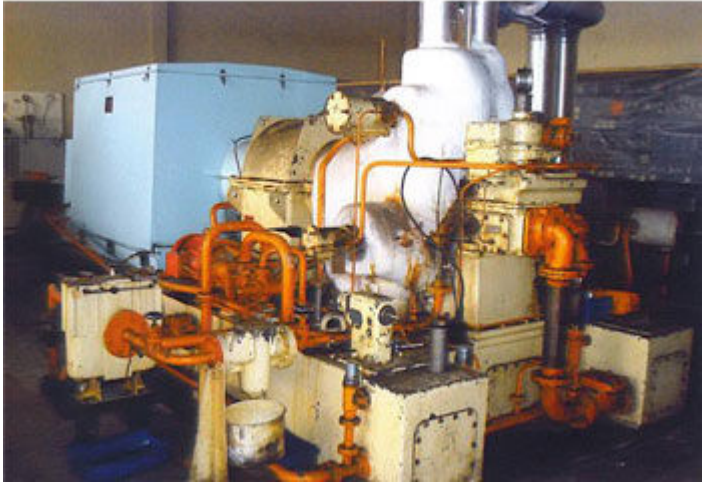
Excitation Amps 13, Volts 47

Frame size Ax 8538, Enclosure CACW

Bruce Peebles Ltd.

PRODUCT IMAGES :





NITIN CORPORATION