



Tel: Off : +91 22 2523 4478 / 67973677  
Fax : +91 22 2523 5386  
E mail : enquiry@corponit.com  
Website : www.corponit.com

**DEALERS & IMPORTERS OF POWER PLANTS & ALLIED MACHINERY**

402, 4th Floor, Bezzola Commercial Complex, V.N. Purav Marg, Sion Trombay Road, Chembur, Mumbai – 400071, INDIA.

## **2 x 6 MW BBC make Back Pressure type Steam Turbine Generator Sets:**

Year of construction : 1966  
Operating hours : approx. 69,000 h.

### **TURBINE:**

Type : DGSSF 2g 34  
Speed : 6500 rpm

### **Provisional operation**

Live steam pressure : 20 bar  
Live steam temperature : 390 °C  
Output : 6000 kW

### **After modification in 1976**

Live steam pressure : 35 bar  
Live steam temperature : 440 °C  
Output : 7200 kW with 54 t/h steam flow  
Steam flow : max. 56.26 t/h  
Backpressure : 2.6 bar (2.1 - 3.6 bar)

### **GEARBOX:**

Manufacture : Krupp  
Type : DSU 40 (planetary)  
Output : 10,880 hp (8000 kW)  
Speed : 6500 / 1500 rpm

### **ALTERNATOR:**

Manufacture	:	BBC
Type	:	WR 74 k
Output	:	7200 kVA
Power factor	:	0.83
Voltage	:	6.3 kV
Current	:	660 A
Isolation class	:	B
Speed	:	1500 rpm
Excitation	:	65 V - 425 A

#### **EXCITER:**

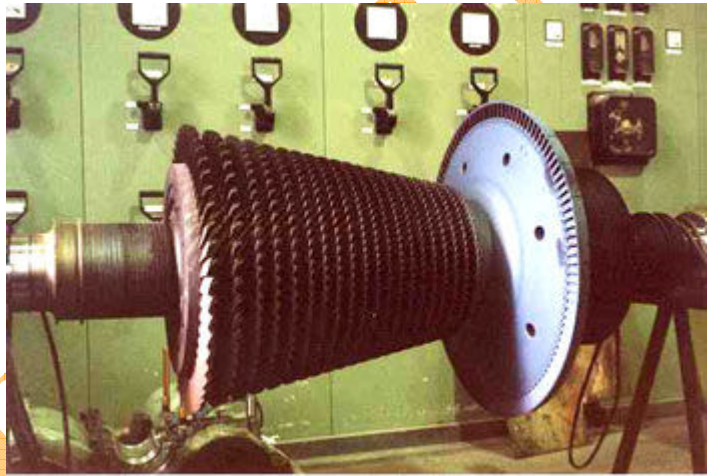
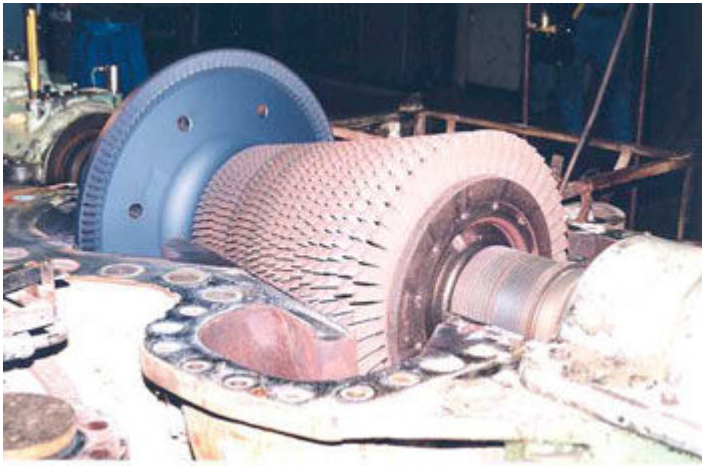
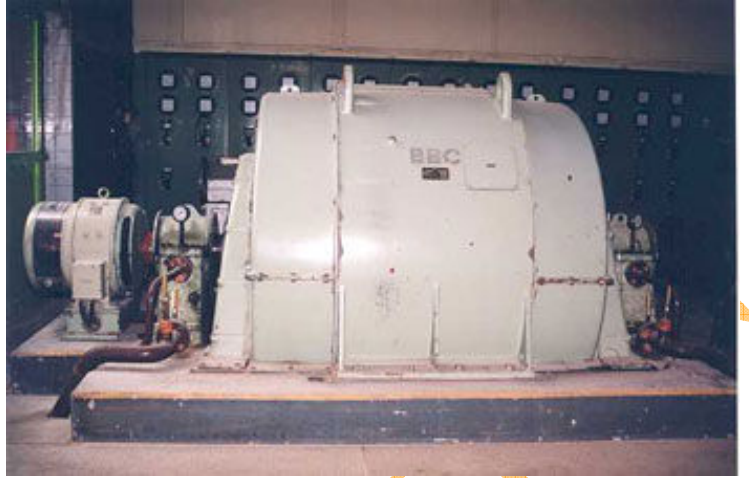
Type	:	GF 144
Voltage	:	65 V - max. 75 V
Current	:	425 A - max. 480 A
Output	:	36 kW
Speed	:	1500 rpm

#### **SCOPE OF SUPPLY:**

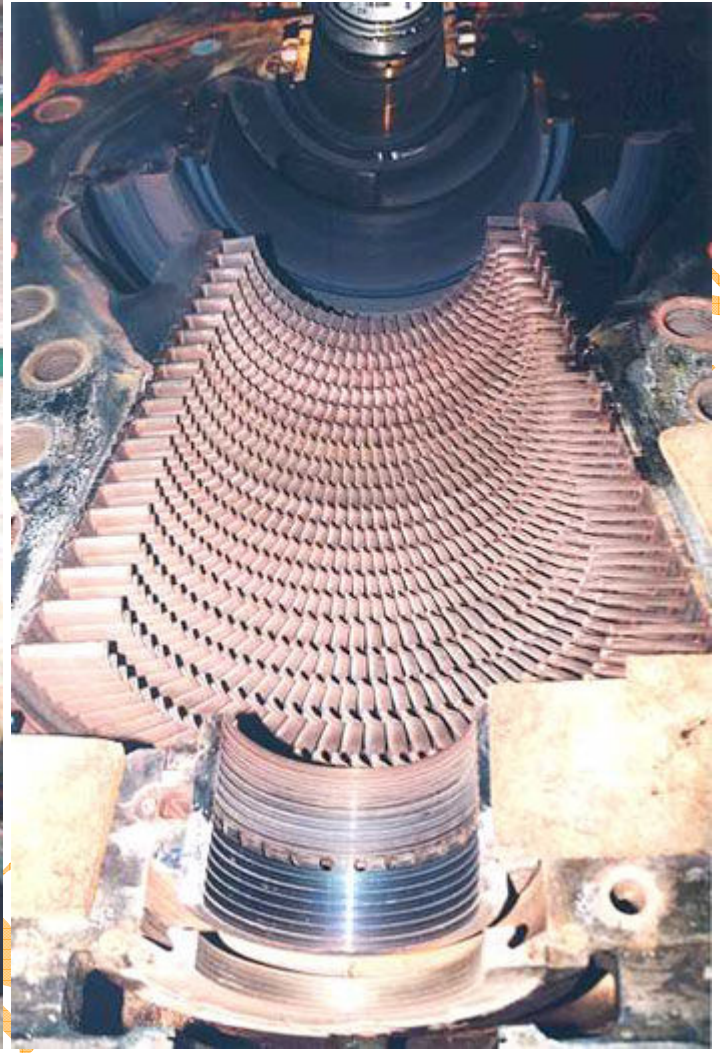
The complete installation as arranged is available and contains, inter alia, the following parts:

- Turbine
- Gearbox
- Alternator with exciter and air coolers
- Base plates for turbine, gearbox and alternator
- Electrical equipment with voltage regulation, protection, star point, etc.
- Oil unit with oil tank (4800 l.), pumps, coolers and filter; etc.
- control cabinets with instrumentation
- Piping with valves and fittings
- Spare parts as far as available
- Manuals, drawings and documentation

#### **PRODUCT IMAGES :**



NITIN CORP



ATTN C