



Tel: Off : +91 22 2523 4478 / 67973677
Fax : +91 22 2523 5386
E mail : enquiry@corponit.com
Website : www.corponit.com

DEALERS & IMPORTERS OF POWER PLANTS & ALLIED MACHINERY

402, 4th Floor, Bezzola Commercial Complex, V.N. Purav Marg, Sion Trombay Road, Chembur, Mumbai - 400071, INDIA.

CIR No.NC:CIR:1.5MW TRIVENI

C I R C U L A R

The following Steam Turbo Generator set available for sale with us ex-stock with immediate delivery.

1 No. 1500 KW TRIVENI (1975) make back pressure type Steam TurboGenerator set having the following technical parameters:

TURBINE:

Make : TRIVENI
Year of manufacture : 1975
Type : 550mm
Capacity : 1500 kW
Inlet steam pressure :
 Nor. : 14 Kg/Cm2
 Max. : 21 Kg/Cm2
Inlet steam temp. : 250oC.
Exhaust steam pressure:
 Nor. : 0.8 Kg/Cm2
 Max. : 1.1 Kg/Cm2
Speed : 8250 RPM
Trip Speed : 9100/9500 RPM
Inlet Size : 8"
Direction of rotation : Anti-clockwise as viewed from governor end

GEAR BOX:

Make : TRIVENI
Type : Single Reduction
Input Speed : 8250 RPM
Output speed : 1500 RPM
Capacity : 2250 HP
Ratio : 5.5:1

ALTERNATOR:

Make : JYOTI
Capacity : 1875 kVA (1500 kW)

Speed	:	1500 RPM
Amps	:	2460
No.of stages	:	3
Voltage	:	440 V
Cycle	:	50 Hz
P.F.	:	0.8
Connection	:	Star
Rating	:	Continuous
Type of cooling	:	CACW

EXCITATION:

Excitation voltage	:	52 V
Excitation Amps	:	56 A

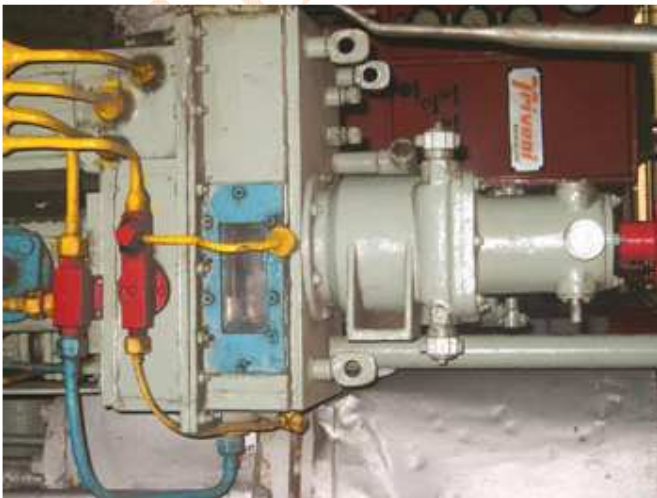
Note:

The above STG set is in excellent condition and is complete with the following auxiliaries:

- a) Inlet Valve – 8”
- b) Complete governing system
- c) AOP with Electric Motor
- d) 2 Nos. Oil filters
- e) 2 Nos. Oil coolers
- f) Oil tank in base frame and inter-connecting oil pipelines
- g) Hand priming pump
- h) Exhaust valve and bellow
- i) Turbine control panel
- j) Excitation-cum- AVR panel with 2 channels

The manuals and drawings of the STG set are available.

PRODUCT IMAGES :







NITIN CORPORATION