



Tel: Off : +91 22 2523 4478 / 67973677  
Fax : +91 22 2523 5386  
E mail : enquiry@corponit.com  
Website : www.corponit.com

**DEALERS & IMPORTERS OF POWER PLANTS & ALLIED MACHINERY**

402, 4th Floor, Bezzola Commercial Complex, V.N. Purav Marg, Sion Trombay Road, Chembur, Mumbai – 400071, INDIA.

**1 x 10 MW WH ALLEN SONS & CO. Ltd.(ENGLAND) make Back Pressure type Steam Turbine Generator Set :**

**Technical Details Of Turbine :**

Manufacturer	:	W. H. Allen Sons & Company Limited, Bedford, England.
Year	:	1973
Maximum Continuous Rating	:	10,000 kW
Turbine No.	:	T4/83696
Normal running speed	:	8040 RPM
Trip speed	:	8844 RPM
Inlet pressure (at stop valve)	:	Normal 615 psiG (42.4 bar)
Inlet temperature (at stop valve)	:	770 Deg. F (410 Deg. C)
Maximum inlet temperature	:	850 Deg. F (454 Deg. C)
Exhaust steam pressure	:	Normal 30 psiG (2.06 bar) / Minimum 25 psiG (1.72 bar) / Maximum 35 psiG (2.41 bar)
Exhaust steam temperature	:	Normal 295 Deg. F (146 Deg. C) Maximum 750 Deg. F (399 Deg. C)

**Technical Details Of Gearbox :**

Manufacturer	:	W. H. Allen Sons & Company Limited, England
Type	:	Epicyclic Gear/ Star Type
Year	:	1972
Maximum Continuous Rating	:	15,750 HP
Input Speed	:	8040 RPM
Output Speed	:	1,500 RPM

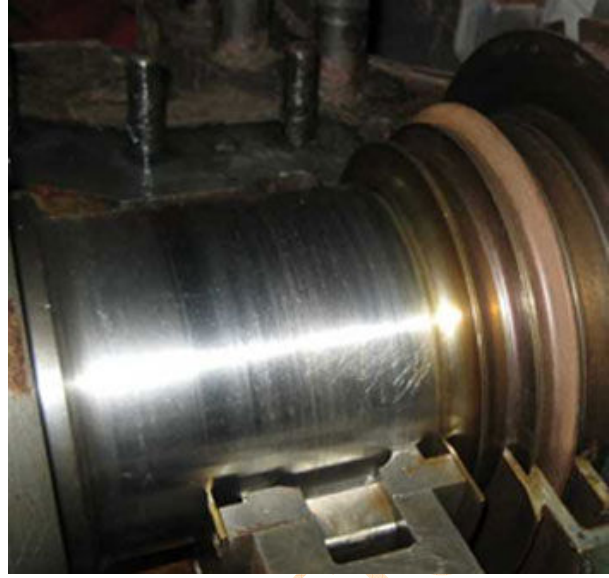
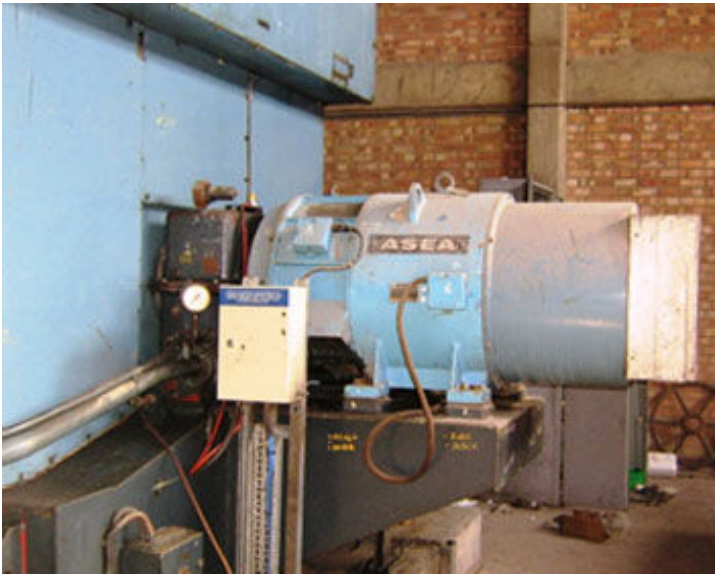
Ratio : 5.36 : 1

**Technical Details Of Generator :**

Manufacturer : ASEA, England.  
Type : GAE 1510  
Enclosure : C. A.C.W.  
Type : 6329618  
Year : 1972  
Maximum Continuous Rating : 12500 kVA  
Insulation : Class F  
Active Power : 10000 kW  
Amps : 656 A  
Voltage : 11,000 V  
Frequency : 50 Hz  
Number of Phases : 3  
Speed : 1,500 RPM

**PRODUCT IMAGES :**





NITIN CORPORATI