



Tel: Off : +91 22 2523 4478 / 67973677  
Fax : +91 22 2523 5386  
E mail : enquiry@corponit.com  
Website : www.corponit.com

**DEALERS & IMPORTERS OF POWER PLANTS & ALLIED MACHINERY**

402, 4th Floor, Bezzola Commercial Complex, V.N. Purav Marg, Sion Trombay Road, Chembur, Mumbai – 400071, INDIA.

### 1 x 8.94 MW ESCHER WYSS Make Back Pressure Type Steam Turbine Generator Set :

Year of construction : 1970

#### **TURBINE:**

Type : NGH 125  
Output (AC) : 8940 kW  
Speed : 9300 rpm  
Live steam pressure : 57 bar - max. 60 bar  
Live steam temperature : 525 °C- max. 530 °C  
Steam flow : max. 60 t/h  
Pass-out after stage 1 (uncontrolled) : 30.5 bar / 455 °C - 4 t/h  
Pass-out after stage 2 (uncontrolled) : 21.6 bar / 412 °C - 4 t/h  
Backpressure : 4.2 bar / 226 °C

#### **GEARBOX:**

Manufacture : Tacke  
Type : TSGS-630 H  
Output : 8370 kW - max. 8640 kW  
Speed : 9300 / 1500 rpm  
Turning direction : left / right

#### **ALTERNATOR:**

Manufacture : Schorch  
Type : W 7832/4U  
Output : 10,000 kVA  
Power factor : 0.9  
Voltage : 10.5 kV

Current	: 550 A
Construction	: B3
Isolation class	: B/F
Protection class	: P 33
Speed	: 1500 rpm
Cooling water flow	: 28 m <sup>3</sup> /h (max. 15 °C)
Excitation	: 65 V - 520 A

**EXCITER:**

Type	: LG 20
Voltage	: 72 V
Current	: 542 A
Output	: 39 kW
Speed	: 1500 rpm

**ORIGINAL PERFORMANCE FIGURES**

**WHEN OPERATED AT 57 BAR / 525 °C LIVE STEAM AND 4.2 BAR BACKPRESSURE**

**WITHOUT PASS-OUT:**

Output	8940	6745	4910	kW (AC)
Steam flow	58.2	44.2	34.0	t/h
Spec. steam consumption	6.51	6.55	6.92	kg/kWh

**EFFICIENCY ALTERNATOR AT P.F. = 0.9:**

Load points	5/4	4/4	3/4	2/4
Efficiency %	97.1	97.5	97.5	97.1

**SCOPE OF SUPPLY:**

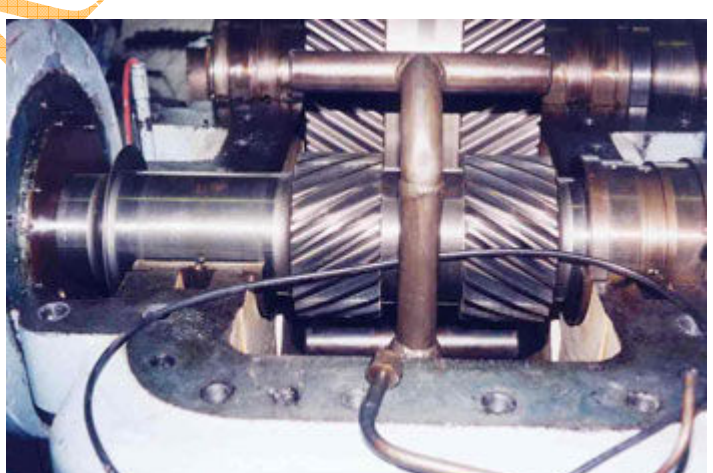
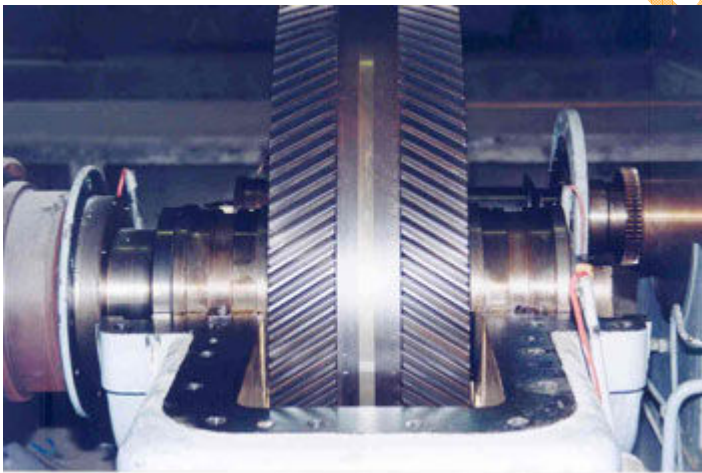
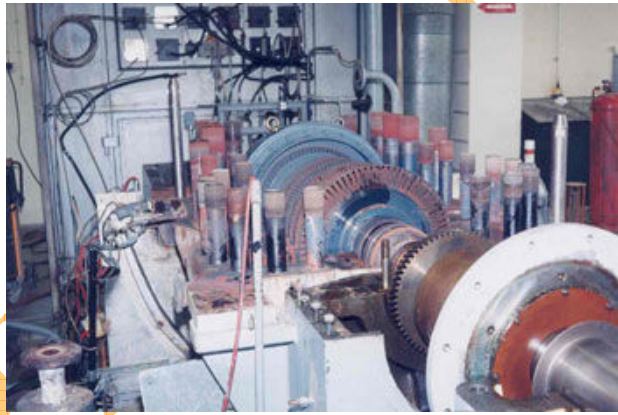
The turboset is installed on a steel foundation with 6 supports with spring assemblies in between, which are included in the scope of supply (substantial savings in costs during the re-erection). Turbine with turning gear, gearbox and alternator with exciter and air coolers on the steel foundation

The complete turbo-alternator set, as stored, is available. The scope of supply includes inter alia:

- turbine with turning gear
- gearbox

- alternator with exciter and air coolers
- steel foundation (incl. spring assemblies and supports)
- oil unit with pumps, cooler and filter (oil tank is part of the steel foundation)
- gland steam condenser
- electrical equipment with voltage regulation, protection, star point, synchroniser, etc.
- control cabinets with instrumentation
- available spare parts (large stock)
- manuals, drawings and documentation.

### PRODUCT IMAGES :





NITIN.COM