



Tel: Off : +91 22 2523 4478 / 67973677  
Fax : +91 22 2523 5386  
E mail : enquiry@corponit.com  
Website : www.corponit.com

**DEALERS & IMPORTERS OF POWER PLANTS & ALLIED MACHINERY**

402, 4th Floor, Bezzola Commercial Complex, V.N. Purav Marg, Sion Trombay Road, Chembur, Mumbai – 400071, INDIA.

**1 x 5.97 MW AEG-KANIS make Back Pressure type Steam Turbine Generator Set :**

Year of construction : 1968  
Re-erected : 1985 (general overhaul)  
Operating hours in total : approx. 54,000 h.

**TURBINE**

Type : G 40  
Terminal output : 5970 kW  
Speed : 9900 rpm  
Live steam pressure : 36 bar - max. 43 bar  
Live steam temperature : 445 °C  
Backpressure : 4.0 bar

**GEARBOX (planetary)**

Manufacture : BHS  
Type : RP 42 x  
Output : 6600 kW  
Speed : 9900 / 1500 rpm

**ALTERNATOR**

Manufacture : AEG  
Type : S 6872 d4  
Output : 6300 kVA  
Power factor : 0.95  
Voltage : 10.5 kV  
Current : 347 A  
Speed : 1500 rpm

Isolation class	:	B
Construction	:	D 6
Protection	:	P 33 r
Cooling air flow	:	6.4 m <sup>3</sup> /sec
Excitation	:	60 V - 706 A - 45 kW

### ORIGINAL PERFORMANCE FIGURES

#### WHEN OPERATING AT 36 BAR / 445 °C LIVE STEAM AND 4.0 BAR BACKPRESSURE

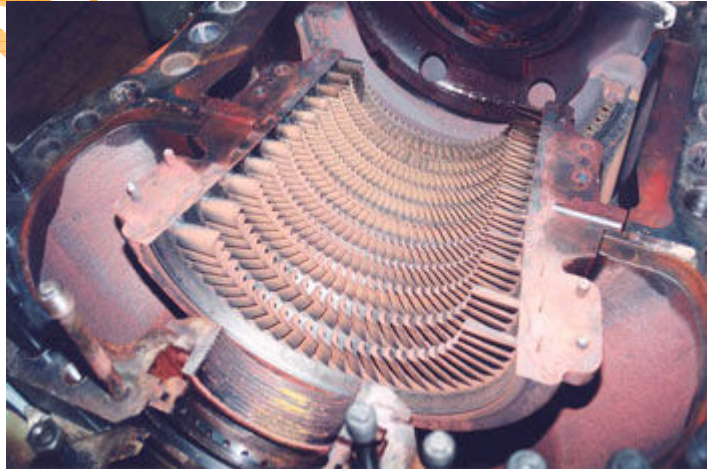
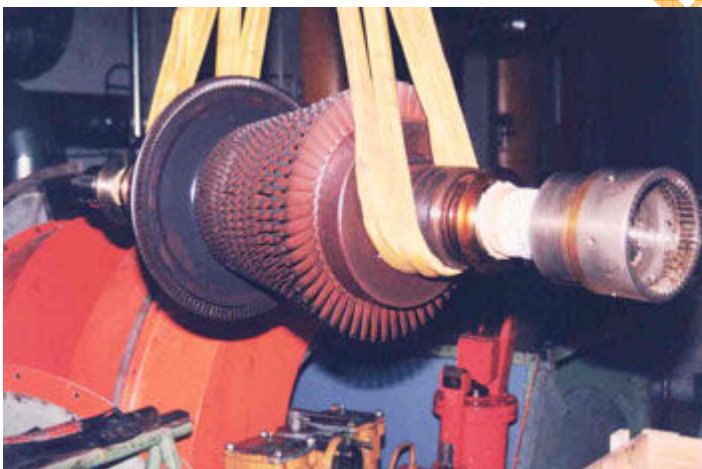
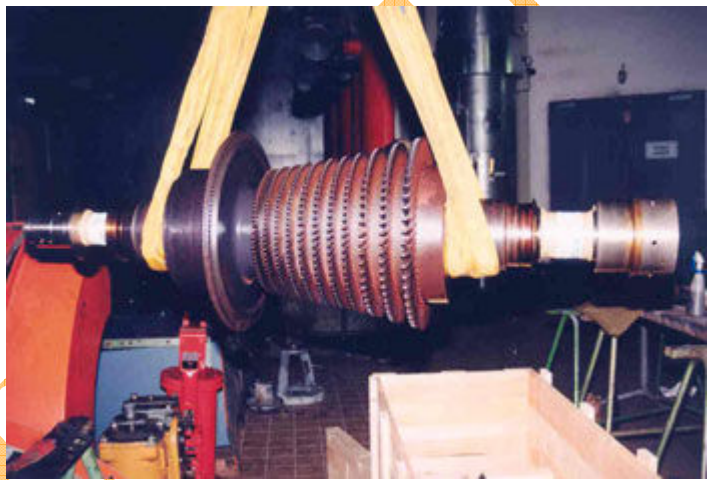
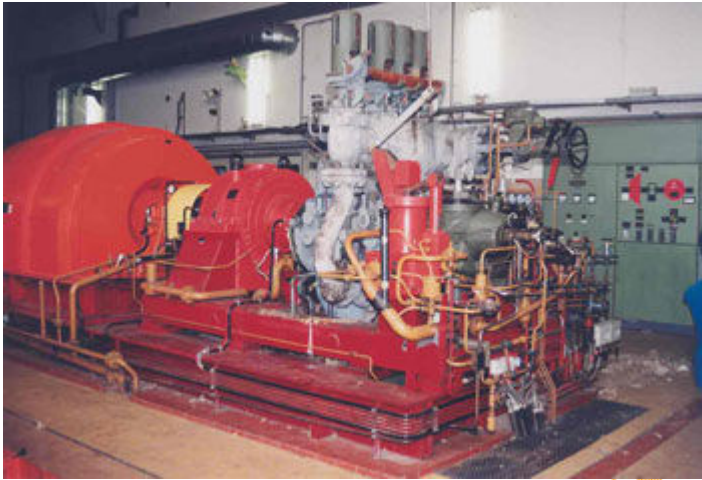
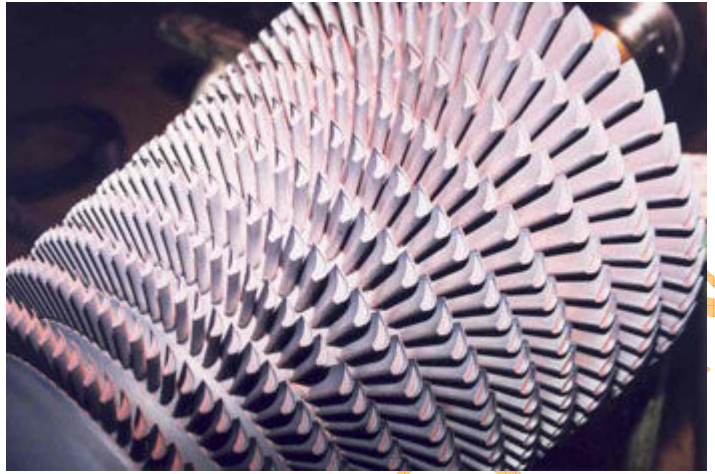
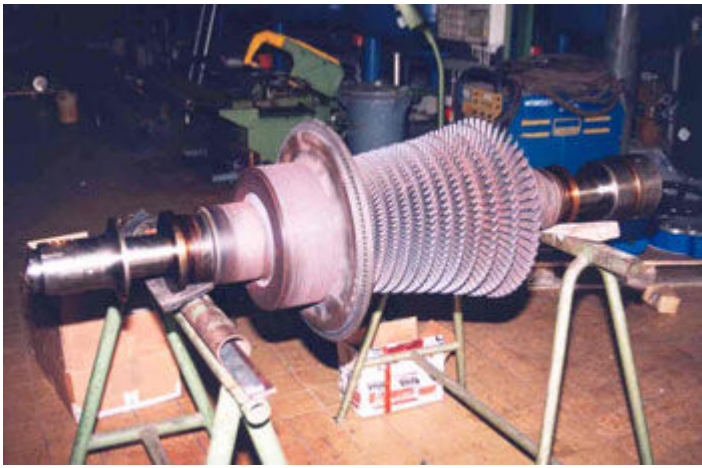
Terminal output	5970	4510	3295	kW
Live steam flow	50.0	37.5	28.0	t/h
Spec. steam consumption	8.37	8.32	8.50	kg/kWh

### SCOPE OF SUPPLY:

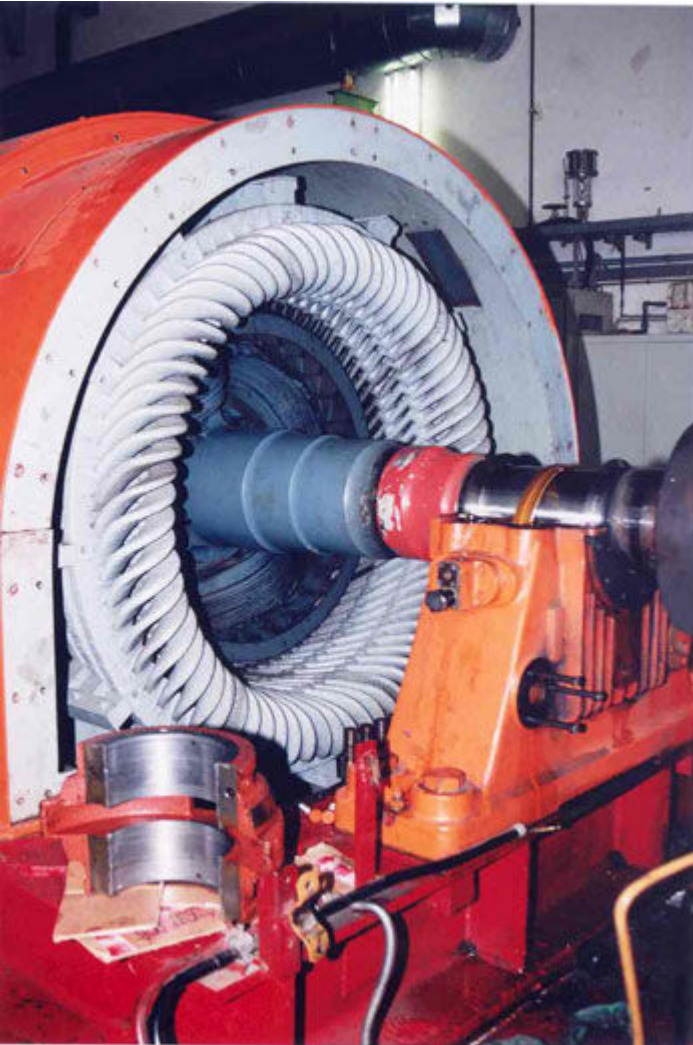
The complete installation as stored, is available and contains, inter alia, the following parts:

- Turbine and gearbox on base plate;
- Alternator with exciter on base plate;
- Alternator air coolers;
- Electrical installation partly (excitation cabinet with voltage and frequency regulation), not available are protection, synchroniser, star point;
- Oil unit with pumps, coolers, filter and oil vapour fan;
- Gland steam condenser;
- control cabinets;
- Instrumentation;
- piping with valves and fittings excl. the exhaust steam pipe system;
- Spare parts (large stock) and tools as far as available;
- Manuals, drawings and documentation;

### PRODUCT IMAGES :



M



PRODUCTION