

NITIN CORPORATION

402, 4th Floor,
Bezzola Commercial Complex,
V.N. Purav Marg, Sion – Trombay Road,
Chembur,
Mumbai – 400071,
India.

WEB: www.corponit.com

E – MAIL: corponit@hotmail.com
enquiry@corponit.com

FAX : +91 - 22 - 25235386

PH (O) : +91 - 22 - 25234478/67973677

7 MW BACK PRESSURE STEAM TURBINE GENERATOR SET



Year of Manufacture : 1967

Year Retired : tba

Service Hours : tba

Condition : Good

Status : Installed on foundation

**NITIN CORPORATION
MUMBAI.**

7 MW SIEMENS MAKE BACK PRESSURE STG SET

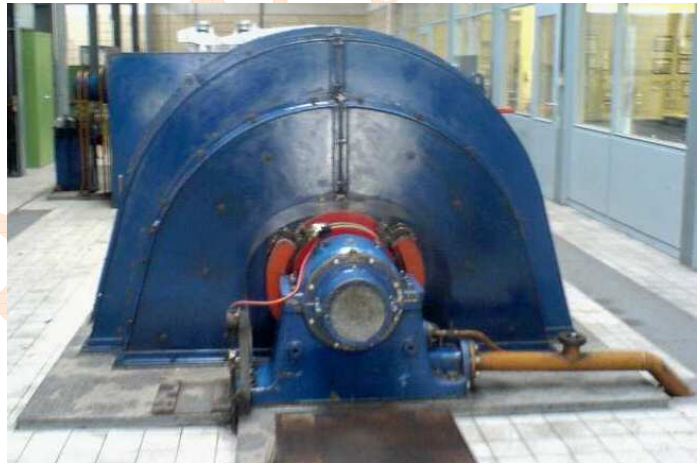
TURBINE

Manufacturer: Siemens
Type: Back-Pressure
Rated Power: 7,080 kW
Rated Inlet Flow: 60,000 kg/h
Rated Inlet Pressure: 37.8 bar abs
Maximum Continuous Pressure: 42 bar abs
Rated Inlet Temperature: 450 °C
Rated Exhaust Pressure: 4.5 bar abs



GENERATOR

Manufacturer: Siemens
Type: 4 Pole
Apparent Power: 9,200 kVA
Active Power: 7,360 kW
Power Factor: 0.8
Rated Speed: 1,500 rpm
Voltage: 6,300
Current: 844 A
Phases: 3
Phase Connection: Star
Frequency: 50 Hz



EXCITER:

Voltage: 73 V
Current: 565 A

GEARBOX:

Manufacturer: Siemens
Input Speed: 8,000 rpm
Output Speed: 1,500 rpm
Ratio: 5:3333:1

