



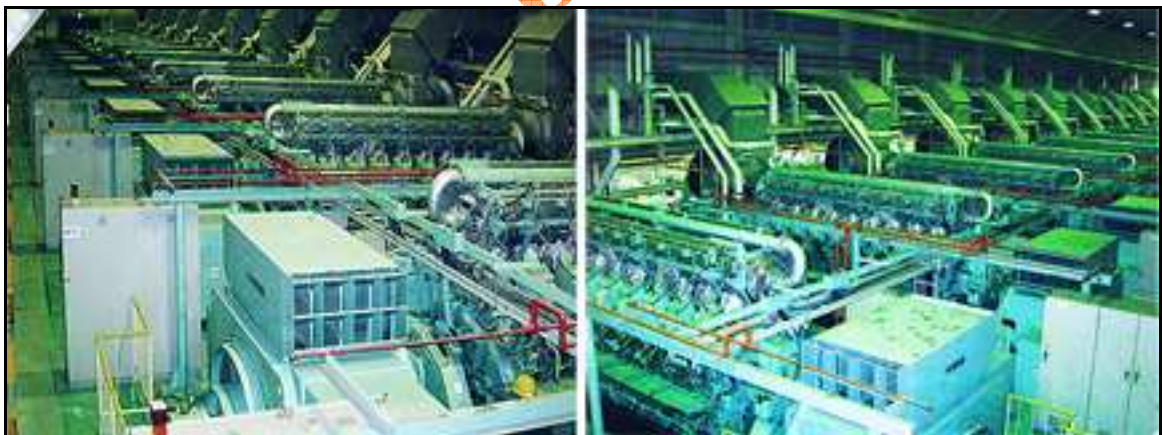
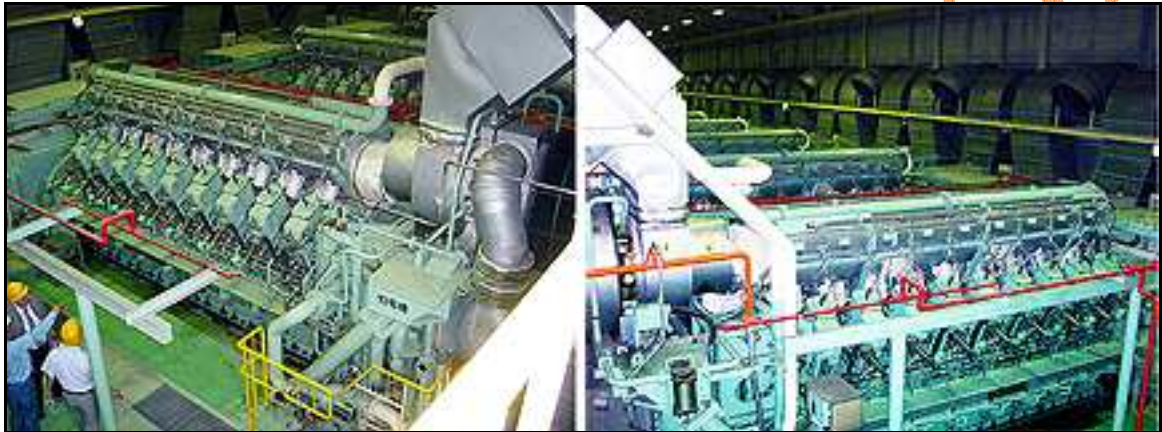
Tel: Off : +91 22 2523 4478 / 67973677
Fax : +91 22 2523 5386
E mail : enquiry@corponit.com
Website : www.corponit.com

DEALERS & IMPORTERS OF POWER PLANTS & ALLIED MACHINERY

402, 4th Floor, Bezzola Commercial Complex, V.N. Purav Marg, Sion Trombay Road, Chembur, Mumbai - 400071, INDIA.

Technical Details & Photographs of 10x5.75 MW Mitsubishi make Gas Fired Generators

10 x 2003 Mitsubishi 18KU30GA 5.75mw 50Hz Gas Fired Generators



Year manufactured: 2003
Packager: NSC Engineering,
Number: 10 Units
Type: Gas Engine Generator
Total Working Hours: 20,000 Hours. (Abt. 400 Hours Per Month)
Every 4000 Hours Overhauled
Last Overhauled Time Apr., 2008
Good Condition
Disconnected from Grid. Cannot For Test Run.
Every 2 Units-Synchronized

Consisting Of

10 Units Of Gas Engines
Generators
Compressed Air Tank
Worm Up Units,
Fuel Supply Units
Duplication Oil Units
10 Control Units
Other Control Units.
2 Main Step Down Transformer For 11000volt to 6600volt,
2 Units Of 6600 volt to 440 volt.
Duplication Oil Tank
1 Heavy Fuel Oil Tank
Pure Water Tank
Chimney
NOx Removable Units
Cooling Tower
Drain Water Tank
Industrial Water Buffer Tank

57.5mw Gas Engine Power Plant Spec

Gas Engines

Qty:	10 Units
Type:	4 Cycle V Type Piston Type Air Cooled Static Pressure Supercharge Pilot Ignition. Gas Engine (When Start The Engine, Use A Fuel, But Once Start The Engine, Fuel Is Natural Gas)
Model Mitsubishi:	18KU30GA 18MACH-30G
Size:	8420 X 3180 X 3720mm Abt. 60 Ton
No. Of Cylinder:	18
Cylinder Dia:	300mm
Piston Process:	380mm
Engine Standard Out Put:	5,930kw (For Generator 5,750kw)
Standard Speed:	750rpm
Average Piston Speed:	9.5m/N
Efficiency Ratio:	42.5%
Average Effective Pressure:	1.96mpa
Turning Direction:	Right Turn When Look At The Engine From Generator IDE
Guidance Method:	For Compressed Air
Combustion System:	Combustion Ignition Antechamber Type Lean-Burn System
Fuel Gas:	Natural Gas
Cooling Method:	Generator Body First Cooled Water (Clean Water) Air Chiller, Duplication Chiller Unit:
Second Cooled:	Water (Industrial Water)
First Water Cooled Chiller	
Turning Method:	Electric System
Engine Weight	Abt. 60 Ton (Including Fly Wheel For Dry Weight)

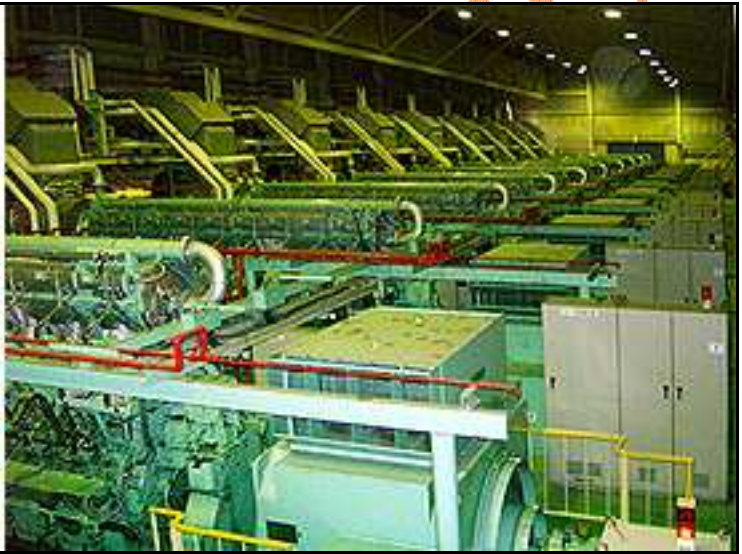
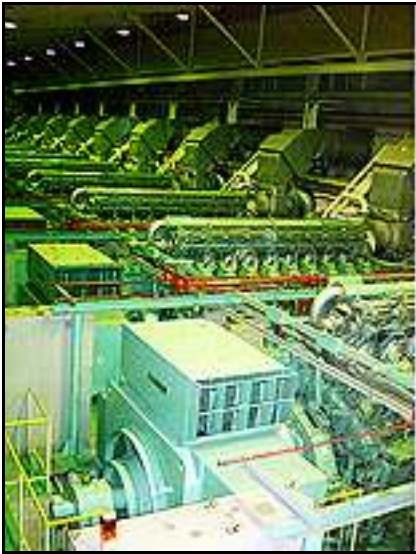
Generator

Description:	3 Phase AC Generator
--------------	----------------------

Qty:	10 Units
Type:	Parallel Revolving Field, Self Ventilating Cooled Silent Pole Type
Output:	6388.9kva (5,750kw
Power Ration:	90%(Delay)
Voltage:	11kvolt
Frequency:	50hz
No. Of Pole:	8
Turning Speed:	750min-1
Phase:	3 Phase 3 Wires
Standard Time:	Continuous
Insulation:	Electric Small Wind Cable. F Cable, Field Cable F Type.
Excitation Type:	Brushless
Neutral Point:	Without Drawing
Exterior Covering Mechanism:	Protected Type (Drip Proof Open Type)
Ventilation System:	Self-Ventilating Type
Damping Coil:	Attached
Synchro Bearing	1 Pce
Type Of Bearing:	Pedestal Type
Fitting Type:	Rigid Type Fitting.

AC Exciter

Type:	Rotary Generator
Armature Type.	
Synchronous Generator	
Exterior Covering Mechanism:	Protection Type (Drip Proof Open Type)
Ventilation System:	Self-Ventilating System.
Rotor Mechanism:	Rotor Is Attached With Main Generator Unit.
Type Of Insulation:	Electric Small Wind Cable F Type, Filed Cable F Type





NITIN CORP