



DEALERS & IMPORTERS OF POWER PLANTS & ALLIED MACHINERY

402, 4th Floor, Bezzola Commercial Complex, V.N. Purav Marg, Sion Trombay Road, Chembur, Mumbai – 400071, INDIA.

Tel: Off : +91 22 2523 4478 / 67973677
Fax : +91 22 2523 5386
E mail : enquiry@corponit.com
Website : www.corponit.com

TECHNICAL DETAILS OF 4 X 6.35 MW EACH, DEUTZ, 16M640, GENERATORS

SCOPE OF SUPPLY FOR DEUTZ 16M640 - 4UNITS

Item	Description	Qty.
Engine:		4 Units
Manufacture:	DEUTZ GERMANUY	
Type:	16M640	
Rated Output:	6350KW	
Year:	1992	
	S/N.	Running Hours
1#	SN:640.16.10027	22672
2#	SN:640.16.10028	31930
3#	SN:640.16.10029	30695
4#	SN:640.16.10030	32620

Turbocharger			4 Units
Manufacture:		ABB	
Type:		VTR354-11	
Alternators			4 Units
Manufacture:		SIEMENS	
Type:		1DK 4735-3BE 03-Z	
	S/N: D92 602 022001-04		
Turning motor			4 Units
Operation Platform			4 Units
Mechanical Part			
Lub. Oil Supply Systems			
Lub. Oil Thermostatic valve			2 Units
Lub. Oil Separator		ALFA-LAVAL LOPX70TSFD 34-50	2 Units
Lub. Oil Self-flushing Filter		Boll& Kirch	2 Units
Pumps, Moto and relevant Devices			
Cooling System			
Cooling Pump			2 Units

Cooling Tank			2 Units
Fuel Oil Supply Systems			2 Units
Fuel Oil Self-flushing Filter			2 Units
Fuel Oil Separator			2 Units
Fuel Viscosity Transducer/Measuring Devices			2 Units
Oil Feed Pump			2 Units
Oil Heater			2 Units
Relevant Pump & Devices			
Compress-Air Systems			
Air Compressor			2 Units
Air Receiver			2 Units
De-compressor			2 Units
Exhaust Gas System			
Exhaust gas Boiler			2 Units
Relevant Pump & Devices			
Electrical Part			
Low-voltage Distribution Panels			2 Units

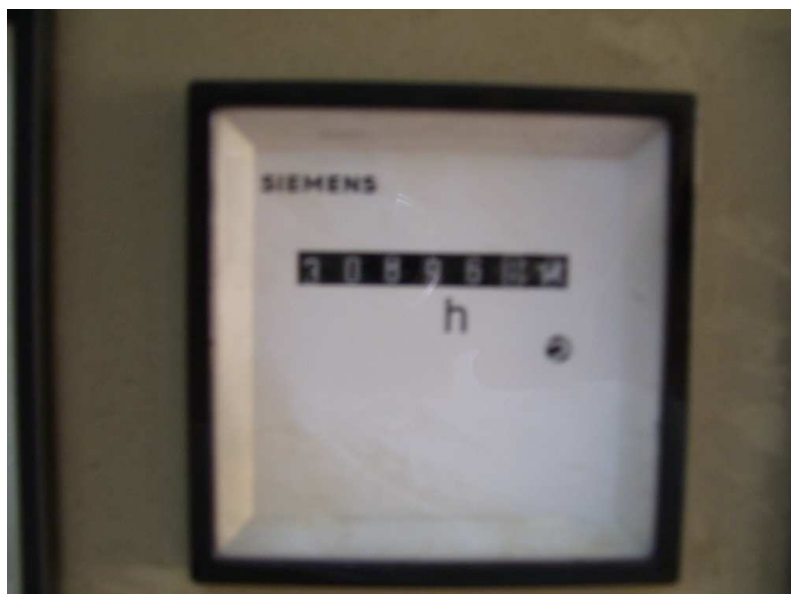
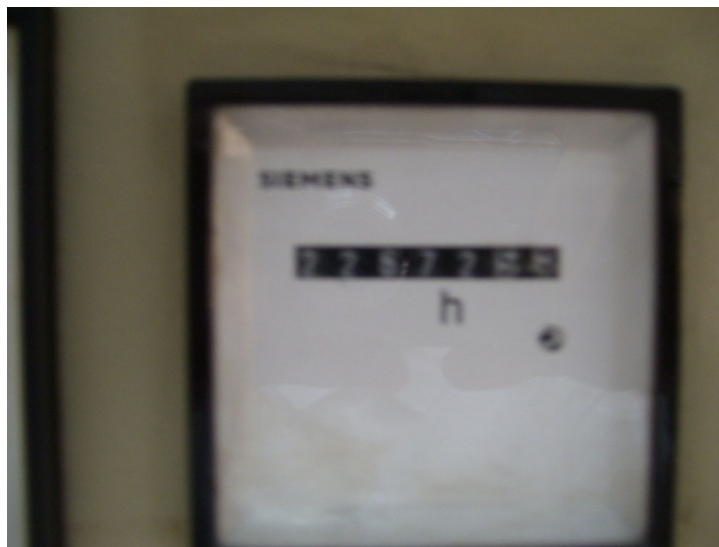
Control, Measuring & Protection Panel			2 Units
--	--	--	---------

Whilst every care has been taken in the preparation of these particulars the correctness is not guaranteed and they are intended as a guide only and do not constitute any part of a contract

PHOTOGRAPHS ATTACHED BELOW....

NITIN CORPORATION

PHOTOGRAPHS :





M



MANORPAC